



**PURCHASING DEPARTMENT**

**Newport News Public Schools**

757-591-4525/ FAX 757-591-4593

12465 WARWICK BOULEVARD • NEWPORT NEWS, VIRGINIA 23606-3041

**March 18, 2025  
Addendum #2  
FOR IMMEDIATE ATTENTION**

ADDENDUM NO. 2 TO ALL BIDDERS:

Reference – Invitation for Bid:	IFB #015-0-2025/SNB Yates Elementary School Security Vestibule and Office Addition & Alterations
For Delivery To:	Newport News Public Schools
Bids Due:	March 31, 2025 at 2:00 PM EST

**The above is hereby changed to read:**

1. **Bid Due Date Extended: Reference Page 1:** Closing Date. The Bid Due Date is hereby changed from March 27, 2025 at 2:00 P.M. EST to “**March 31, 2025 at 2:00 pm EST.**”
2. **Public Bid Opening Zoom Link:** The Zoom link for virtual participants remains unchanged.

Time: Mar 31, 2025 02:00 PM Eastern Time (US and Canada)

Join Zoom Meeting

<https://nn-k12-va-us.zoom.us/j/89547983595?pwd=jUHbtcmMiZjZMKNjw42gfbGH9tVz4e.1>

Meeting ID: 895 4798 3595

Passcode: 588621

3. **Update to Project Manual and Project Drawings:** Please see the following.

All other provisions of the IFB shall remain unchanged.

Sincerely,  
Shannon Bailey, VCCO, VCO  
Director of Procurement  
[shannon.bailey1@nn.k12.va.us](mailto:shannon.bailey1@nn.k12.va.us)  
757-591-4560 x10752

---

Name of Firm

---

Signature/Title

---

Date



## ADDENDUM NO. 2

IFB 015-0-2025/SNB

Newport News Public Schools

**Yates Elementary School Security Vestibule and Office Addition & Alterations**

Newport News, Virginia

March 18, 2025



The following additions, deletions and/or modifications are to be incorporated with the Contract Documents and acknowledgment of receipt of this Addendum shall be noted on the Bid Form submitted.

### **PROJECT MANUAL AND SPECIFICATIONS**

1. PROJECT MANUAL TABLE OF CONTENTS:
  - a) Under Division 06, Wood & Plastic, ADD Specification Section 066116, Fabricated Solid Surface Material Countertops to the list after Section 064023, Interior Architectural Woodwork.
  - b) Under Division 10, Specialties, ADD Specification Section 107516, Ground-Set Flagpoles to the list after Section 105613, Metal Storage Shelving.
2. Section 064023, INTERIOR ARCHITECTURAL WOODWORK:
  - a) Under Paragraph 1.2, Summary, REVISE sub-Item #3 to read as follows: "Countertops, backsplash and end splashes fabricated from solid surface materials shall be as specified under Section 066116, Fabricated Solid Surface Material Countertops."
  - b) Paragraph 2.10, PLASTIC-LAMINATE COUNTERTOPS: OMIT this paragraph and its sub-paragraphs in their entirety.
  - c) Paragraph 3.2, Installation, Sub-Item "J:" REVISE this paragraph in its entirety to read simply as follows: "Install countertops, back and end splashes as specified under Section 066116, Fabricated Solid Surface Material Countertops."
3. Section 066116, FABRICATED SOLID SURFACE MATERIAL COUNTERTOPS: ADD this Section, appended herein, in its entirety following Section 064023, Interior Architectural Woodwork.
4. Section 107516, GROUND-SET FLAGPOLES: ADD this Section, appended herein, in its entirety following Section 105613, Metal Storage Shelving.

### **PROJECT DRAWINGS**

*Revision #2 to the Drawings is included herewith as follows. Revised drawings have revisions clouded and annotated with the Revision #2 symbol.*

5. Architectural Drawing AD1.01: REVISE this drawing to include demolition of resilient flooring and floor base finishes at the existing Office and Workroom next to Classroom #10. New floor finish and wall base are scheduled elsewhere in the Addendum.
6. Architectural Drawing AD2.01: At Demolition Elevations C1, D1 and E1 at bottom of this drawing, ADD a note that revises the extent of existing wall tile demolition as follows: "REMOVE ONLY AS MUCH WALL TILE AS NECESSARY TO REPAIR AND INFILL

THESE WALL SURFACES AS NEEDED TO MATCH EXISTING TILE COURSING AND LAYOUT. A SEPARATE PROJECT SHALL COAT THE TILE TO ACHIEVE A UNIFORM COLOR APPEARANCE."

7. Architectural Drawings A2.03 and 2.04: In general, REVISE ALL enlarged casework details shown on these sheets to change description of the countertops, back and end splashes from "Plastic Laminate (PLAM) on 3/4" Plywood (PLYWD)" to "Fabricated Solid Surface Material (SSM)." It is the intent of this project that ALL new countertops, back and end splashes be fabricated from Solid Surface Material in accordance with Spec Section 066116 as amended herein.
8. Architectural Drawing A4.02: At Tile Elevations A1 at bottom-left of this drawing, ADD a note that revises the extent of new wall tile installation as follows: "REPLACE AND APPLY ONLY AS MUCH WALL TILE AS NECESSARY TO REPAIR AND INFILL THESE WALL SURFACES AS NEEDED TO MATCH EXISTING TILE COURSING AND LAYOUT. A SEPARATE PROJECT SHALL COAT THE TILE TO ACHIEVE A UNIFORM COLOR APPEARANCE. EXISTING TILE DIMENSIONS ARE 4-1/4" BY 4-1/4"."
9. Architectural Drawing A 6.03: On the Room Finish Schedule of this drawing, REVISE the following items:
  - a) In Office 111, REVISE the floor finish to read "CPT" (Carpet). This will be new finishes to replace existing finishes shown to be removed on Demolition Drawing AD1.01.
  - b) In Girls' Toilet 108, REVISE the wall finish to read "XPT" (Existing Paint). Existing walls above the existing tile wainscot shall not be painted except where wall are patched. Soffits and ceilings in this bathroom are not to be painted.
  - c) In Boys' Toilet 109, REVISE the wall finish to read "XPT" (Existing Paint). Existing walls above the existing tile wainscot shall not be painted except where wall are patched. Soffits and ceilings in this bathroom are not to be painted.
10. Architectural Drawing A 6.05: On the Color Schedule of this drawing, under Interior Colors, REVISE Item #21 to read as follows:

"21. COUNTERTOPS, FABRICATED SOLID SURFACE MATERIAL: MEGANITE, "URBAN HABITAT" #704SA."

#### ATTACHMENTS:

Specification Section 066116, FABRICATED SOLID SURFACE MATERIAL COUNTERTOPS  
Specification Section 107516, GROUND-SET FLAGPOLES  
Reissued/Amended Architectural Drawing AD1.01 Demolition Floor Plan  
Reissued/Amended Architectural Drawing AD2.01 Demolition Elevations  
Reissued/Amended Architectural Drawing A2.03 Casework Elevations  
Reissued/Amended Architectural Drawing A2.04 Casework Details  
Reissued/Amended Architectural Drawing A4.02 Enlarged Floor Plan ~ Notations  
Reissued/Amended Architectural Drawing A6.03 Finish Schedule and Door Details  
Reissued/Amended Architectural Drawing A6.05 Floor Pattern Plan & Color Schedule

#### **End of Addendum No. 2**

## **SECTION 066116 – FABRICATED SOLID SURFACE MATERIAL COUNTERTOPS**

### **PART 1 - GENERAL**

#### **1.1 RELATED DOCUMENTS**

- A. Drawings and general provisions of the Contract, including General and Supplementary Conditions and Division 01 Specification Sections, apply to this Section.

#### **1.2 SUMMARY**

- A. Section Includes:

- 1. Solid surface material countertops.
  - 2. Solid surface material backsplashes.
  - 3. Solid surface material end splashes.

- B. Related Requirements:

- 1. Section 064023 "Interior Architectural Woodwork" for interior cabinets upon which countertops shall be installed.
  - 2. Section 220500 "Plumbing" for non-integral sinks and plumbing fittings.

#### **1.3 ACTION SUBMITTALS**

- A. Product Data: For countertop materials.

- B. Shop Drawings: For countertops. Show materials, finishes, edge and backsplash profiles, methods of joining, and cutouts for plumbing fixtures.

- 1. Show locations and details of joints.
  - 2. Show direction of directional pattern, if any.

- C. Samples for Initial Selection: For each type of material exposed to view.

- D. Samples for Verification: For the following products:

- 1. Countertop material, 6 inches (150 mm) square.
  - 2. One full-size solid surface material countertop, with front edge and backsplash, 8 by 10 inches (200 by 250 mm), of construction and in configuration specified.

1.4 INFORMATIONAL SUBMITTALS

- A. Qualification Data: For fabricator.

1.5 CLOSEOUT SUBMITTALS

- A. Maintenance Data: For solid surface material countertops to include in maintenance manuals. Include Product Data for care products used or recommended by Installer and names, addresses, and telephone numbers of local sources for products.

1.6 QUALITY ASSURANCE

- A. Fabricator Qualifications: Shop that employs skilled workers who custom-fabricate countertops similar to that required for this Project, and whose products have a record of successful in-service performance.
- B. Installer Qualifications: Fabricator of countertops.
- C. Mockups: Build mockups to demonstrate aesthetic effects and to set quality standards for fabrication and execution.
  - 1. Build mockup of typical countertop as shown on Drawings.
  - 2. Subject to compliance with requirements, approved mockups may become part of the completed Work if undisturbed at time of Substantial Completion.

1.7 FIELD CONDITIONS

- A. Field Measurements: Verify dimensions of countertops by field measurements after base cabinets are installed but before countertop fabrication is complete.

1.8 COORDINATION

- A. Coordinate locations of utilities that will penetrate countertops or backsplashes.

**PART 2 - PRODUCTS**

2.1 SOLID SURFACE COUNTERTOP MATERIALS

- A. Solid Surface Material: Homogeneous-filled plastic resin complying with ICPA SS-1.

1. Acceptable Manufacturers and Products: Provide solid surface sheet good products from one of the manufacturers listed below. Products of other manufacturers not listed may be substituted, subject to complying with all specified requirements and submittal/approval by the Architect.
    - a. DuPont "Corian."
    - b. Wilsonart "Solid Surface."
    - c. Formica "Solid Surface."
    - d. Avonite "Surfaces."
    - e. "Meganite."
  2. Type: Provide Standard type unless Special Purpose type is indicated.
  3. Colors and Patterns: As indicated in the Color Schedule on the Drawings, or otherwise as selected by Architect from full range of manufacturer's standard colors.
- B. Plywood: Exterior softwood plywood complying with DOC PS 1, Grade C-C Plugged, touch-sanded.

## 2.2 COUNTERTOP FABRICATION

- A. Fabricate countertops according to solid surface material manufacturer's written instructions and to the AWI/AWMAC/WI's "Architectural Woodwork Standards."
1. Grade: Custom.
- B. Configuration:
1. Front: Beveled.
  2. End Splash: Matching backsplash.
- C. Countertops: 1/2-inch- (12.7-mm-) with front edge built up with same material.
- D. Backsplashes: 1/2-inch- (12.7-mm-) thick, solid surface material with wood-trimmed edges.
- E. Fabricate tops with shop-applied edges and backsplashes unless otherwise indicated. Comply with solid surface material manufacturer's written instructions for adhesives, sealers, fabrication, and finishing.
1. Fabricate with loose backsplashes for field assembly.
  2. Install integral sink bowls in countertops in the shop.
- F. Joints: Fabricate countertops without joints.
- G. Joints: Fabricate countertops in sections for joining in field.

1. Joint Locations: Not within 18 inches (450 mm) of a sink or end, and not where a countertop section less than 36 inches (900 mm) long would result, unless unavoidable.
2. Splined Joints: Accurately cut kerfs in edges at joints for insertion of metal splines to maintain alignment of surfaces at joints. Make width of cuts slightly more than thickness of splines to provide snug fit. Provide at least three splines in each joint.

H. Cutouts and Holes:

1. Undercounter Plumbing Fixtures: Make cutouts for fixtures in shop using template or pattern furnished by fixture manufacturer. Form cutouts to smooth, even curves.
  - a. Provide vertical edges, slightly eased at juncture of cutout edges with top and bottom surfaces of countertop and projecting 3/16 inch (5 mm) into fixture opening.
  - b. Provide vertical edges, rounded to 3/8-inch (10-mm) radius at juncture of cutout edges with top surface of countertop, slightly eased at bottom, and projecting 3/16 inch (5 mm) into fixture opening.
  - c. Provide 3/4-inch (20-mm) full bullnose edges projecting 3/8 inch (10 mm) into fixture opening.
2. Counter-Mounted Plumbing Fixtures: Prepare countertops in shop for field cutting openings for counter-mounted fixtures. Mark tops for cutouts and drill holes at corners of cutout locations. Make corner holes of largest radius practical.
3. Fittings: Drill countertops in shop for plumbing fittings, undercounter soap dispensers, and similar items.

2.3 INSTALLATION MATERIALS

- A. Adhesive: Product recommended by solid surface material manufacturer.
- B. Sealant for Countertops: Comply with applicable requirements in Section 079200 "Joint Sealants."

**PART 3 - EXECUTION**

3.1 EXAMINATION

- A. Examine substrates to receive solid surface material countertops and conditions under which countertops will be installed, with Installer present, for compliance

with requirements for installation tolerances and other conditions affecting performance of countertops.

- B. Proceed with installation only after unsatisfactory conditions have been corrected.

### 3.2 INSTALLATION

- A. Install countertops level to a tolerance of 1/8 inch in 8 feet (3 mm in 2.4 m), 1/4 inch (6 mm) maximum. Do not exceed 1/64-inch (0.4-mm) difference between planes of adjacent units.
- B. Fasten countertops by screwing through corner blocks of base units into underside of countertop. Predrill holes for screws as recommended by manufacturer. Align adjacent surfaces and, using adhesive in color to match countertop, form seams to comply with manufacturer's written instructions. Carefully dress joints smooth, remove surface scratches, and clean entire surface.
- C. Fasten subtops to cabinets by screwing through subtops into cornerblocks of base cabinets. Shim as needed to align subtops in a level plane.
- D. Secure countertops to subtops with adhesive according to solid surface material manufacturer's written instructions. Align adjacent surfaces and, using adhesive in color to match countertop, form seams to comply with manufacturer's written instructions. Carefully dress joints smooth, remove surface scratches, and clean entire surface.
- E. Bond joints with adhesive and draw tight as countertops are set. Mask areas of countertops adjacent to joints to prevent adhesive smears.
  - 1. Install metal splines in kerfs in countertop edges at joints. Fill kerfs with adhesive before inserting splines and remove excess immediately after adjoining units are drawn into position.
  - 2. Clamp units to temporary bracing, supports, or each other to ensure that countertops are properly aligned and joints are of specified width.
- F. Install backsplashes and end splashes by adhering to wall and countertops with adhesive. Mask areas of countertops and splashes adjacent to joints to prevent adhesive smears.
- G. Install aprons to backing and countertops with adhesive. Mask areas of countertops and splashes adjacent to joints to prevent adhesive smears. Fasten by screwing through backing. Predrill holes for screws as recommended by manufacturer.
- H. Complete cutouts not finished in shop. Mask areas of countertops adjacent to cutouts to prevent damage while cutting. Make cutouts to accurately fit items

to be installed, and at right angles to finished surfaces unless beveling is required for clearance. Ease edges slightly to prevent snipping.

1. Seal edges of cutouts in particleboard subtops by saturating with varnish.
- I. Apply sealant to gaps at walls; comply with Section 079200 "Joint Sealants."

**END OF SECTION 123660**

## **SECTION 107516 - GROUND-SET FLAGPOLES**

### **PART 1 - GENERAL**

#### **1.1 RELATED DOCUMENTS**

- A. Drawings and general provisions of the Contract, including General and Supplementary Conditions and Division 01 Specification Sections, apply to this Section.

#### **1.2 SUMMARY**

- A. Section includes ground-set flagpoles made from aluminum.
- B. Owner-Furnished Material: Flags.

#### **1.3 ACTION SUBMITTALS**

- A. Product Data: For each type of product.
  - 1. Include construction details, material descriptions, dimensions of individual components and profiles, operating characteristics, fittings, accessories, and finishes for flagpoles.
- B. Shop Drawings: For flagpoles.
  - 1. Include plans, elevations, and attachment details. Show general arrangement, jointing, fittings, accessories, grounding, anchoring, and support.
  - 2. Include section, and details of foundation system.
- C. Samples for Verification: For each type of exposed finish, in manufacturer's standard sizes.
- D. Delegated-Design Submittal: For flagpoles.

#### **1.4 CLOSEOUT SUBMITTALS**

- A. Operation and Maintenance Data: For flagpoles to include in operation and maintenance manuals.

1.5 DELIVERY, STORAGE, AND HANDLING

- A. Spiral wrap flagpoles with heavy paper and enclose in a hard fiber tube or other protective container.

**PART 2 - PRODUCTS**

2.1 MANUFACTURERS

- A. Source Limitations: Obtain flagpoles as complete units, including fittings, accessories, bases, and anchorage devices, from single source from single manufacturer.

2.2 PERFORMANCE REQUIREMENTS

- A. Delegated Design: Engage a qualified professional engineer, as defined in Section 014000 "Quality Requirements," to design flagpole assemblies.
- B. Structural Performance: Flagpole assemblies, including anchorages and supports, shall withstand design loads indicated within limits and under conditions indicated.
  - 1. Wind Loads: Determine according to NAAMM FP 1001. Basic wind speed for Project location is 125 MPH.
  - 2. Base flagpole design on nylon or cotton flags of maximum standard size suitable for use with flagpole or flag size indicated, whichever is more stringent.

2.3 ALUMINUM FLAGPOLES

- A. Aluminum Flagpoles: Cone-tapered flagpoles fabricated from seamless extruded tubing complying with ASTM B241/B241M, Alloy 6063, with a minimum wall thickness of 3/16 inch (4.8 mm).
- B. Exposed Height: 25 feet (7.5 m)
- C. Construct flagpoles in one piece if possible. If more than one piece is necessary, comply with the following:
  - 1. Fabricate shop and field joints without using fasteners, screw collars, or lead calking.
  - 2. Provide flush hairline joints using self-aligning, snug-fitting, internal sleeves.
- D. Metal Foundation Tube: Manufacturer's standard corrugated-steel foundation tube, 0.060-inch (1.52-mm) wall thickness with 3/16-inch (4.8-mm) steel bottom plate and support plate; 3/4-inch- (19-mm-) diameter, steel ground spike; and

steel centering wedges welded together. Galvanize foundation tube after assembly. Furnish loose hardwood wedges at top of foundation tube for plumbing pole.

1. Flashing Collar: Same material and finish as flagpole.

E. Sleeve for Aluminum Flagpole: Fiberglass or PVC pipe foundation sleeve, made to fit flagpole, for casting into concrete foundation.

1. Flashing Collar: Same material and finish as flagpole.

F. Cast-Metal Shoe Base: Made from aluminum with same finish and color as flagpoles for anchor-bolt mounting; furnish with anchor bolts.

1. Furnish ground spike.

G. Hinged Baseplate: Cast-metal tilting hinged base and anchor plate joined by permanently secured pivot rod. Furnish with stainless-steel screws for securing tilting base to anchor plate when not tilted; furnish with anchor bolts.

1. Finish: Same as flagpole.

2. Furnish aluminum base or aluminum flashing collar finished to match flagpole.

3. Furnish ground spike.

H. Pivoting Tilt Base: Steel baseplate with channel or rectangular tube uprights, pivot bolt, and locking device for tilting flagpole. Furnish tilting flagpole with steel counterweight box and weights, or furnish with internal counterweight. Furnish base with anchor bolts.

1. Finish: Same as flagpole.

2. Furnish ground spike.

## 2.4 FITTINGS

A. Finial Ball: Flush-seam ball, sized as indicated or, if not indicated, to match flagpole-butt diameter.

1. 0.063-inch (1.6-mm) spun aluminum, finished to match flagpole.

B. Internal Halyard, Winch System: Manually operated winch with control stop device and removable handle, stainless-steel cable halyard, and concealed revolving truck assembly with plastic-coated counterweight and sling. Furnish flush access door secured with cylinder lock. Finish truck assembly to match flagpole.

1. Halyard Flag Snaps: Stainless-steel swivel snap hooks with neoprene or vinyl covers. Furnish two per halyard.

- C. [OPTIONAL] Internal Halyard, Cam Cleat System: 5/16-inch- (8-mm-) diameter, braided polypropylene halyard; cam cleat; and concealed revolving truck assembly with plastic-coated counterweight and sling. Furnish flush access door secured with cylinder lock. Finish truck assembly to match flagpole.
  - 1. Halyard Flag Snaps: Stainless-steel swivel snap hooks with neoprene or vinyl covers. Furnish two per halyard.

## 2.5 MISCELLANEOUS MATERIALS

- A. Nonshrink, Nonmetallic Grout: Factory-packaged, non-staining, noncorrosive, nongaseous grout complying with ASTM C1107/C1107M.
- B. Drainage Material: Crushed stone, or crushed or uncrushed gravel; coarse aggregate.
- C. Sand: ASTM C33/C33M, fine aggregate.
- D. Elastomeric Joint Sealant: Multicomponent nonsag urethane joint sealant complying with requirements in Section 079200 "Joint Sealants."
- E. Bituminous Paint: Cold-applied asphalt emulsion complying with ASTM D1187/D1187M.

## 2.6 ALUMINUM FINISHES

- A. Natural Satin Finish: AA-M32, fine, directional, medium satin polish; buff complying with AA-M20; seal aluminum surfaces with clear, hard-coat wax.
- B. Clear Anodic Finish: AAMA 611, AA-M12C22A41.
  - 1. Color: Clear aluminum, as specified.
  - 2. Appearance of Finished Work: Noticeable variations in same piece are not acceptable. Variations in appearance of adjoining components are acceptable if they are within the range of approved Samples and are assembled or installed to minimize contrast.

# PART 3 - EXECUTION

## 3.1 PREPARATION

- A. Prepare uncoated metal flagpoles that are set in foundation tubes by painting below-grade portions with a heavy coat of bituminous paint.

- B. Foundation Excavation: Excavate to neat clean lines in undisturbed soil. Remove loose soil and foreign matter from excavation and moisten earth before placing concrete. Place and compact drainage material at excavation bottom.
- C. Provide forms where required due to unstable soil conditions and for perimeter of flagpole base at grade. Secure and brace forms to prevent displacement during concreting.
- D. Foundation Tube: Place foundation tube, center, and brace to prevent displacement during concreting. Place concrete. Plumb and level foundation tube and allow concrete to cure.
- E. Sleeves: Locate and secure sleeves in forms by bracing to reinforcement and forms.
- F. Anchor Bolts: Locate and secure anchor bolts in forms with templates and by tying to reinforcement.
- G. Place concrete, as specified in Section 033000 "Cast-in-Place Concrete." Compact concrete in place by using vibrators. Moist-cure exposed concrete for no fewer than seven days or use non-staining curing compound.
- H. Trowel exposed concrete surfaces to a smooth, dense finish, free of trowel marks, and uniform in texture and appearance. Provide positive slope for water runoff to perimeter of concrete base.

### 3.2 FLAGPOLE INSTALLATION

- A. General: Install flagpoles where indicated and according to Shop Drawings and manufacturer's written instructions.
- B. Foundation Tube: Place flagpole in tube, seated on bottom plate between steel centering wedges, and install hardwood wedges to secure flagpole in place. Place and compact sand in foundation tube and remove hardwood wedges. Seal top of foundation tube with a 2-inch (50-mm) layer of elastomeric joint sealant and cover with flashing collar.
- C. Baseplate: Cast anchor bolts in concrete foundation. Install baseplate on washers placed over leveling nuts on anchor bolts and adjust until flagpole is plumb. After flagpole is plumb, tighten retaining nuts and fill space under baseplate solidly with nonshrink, nonmetallic grout. Finish exposed grout surfaces smooth and slope 45 degrees away from edges of baseplate.

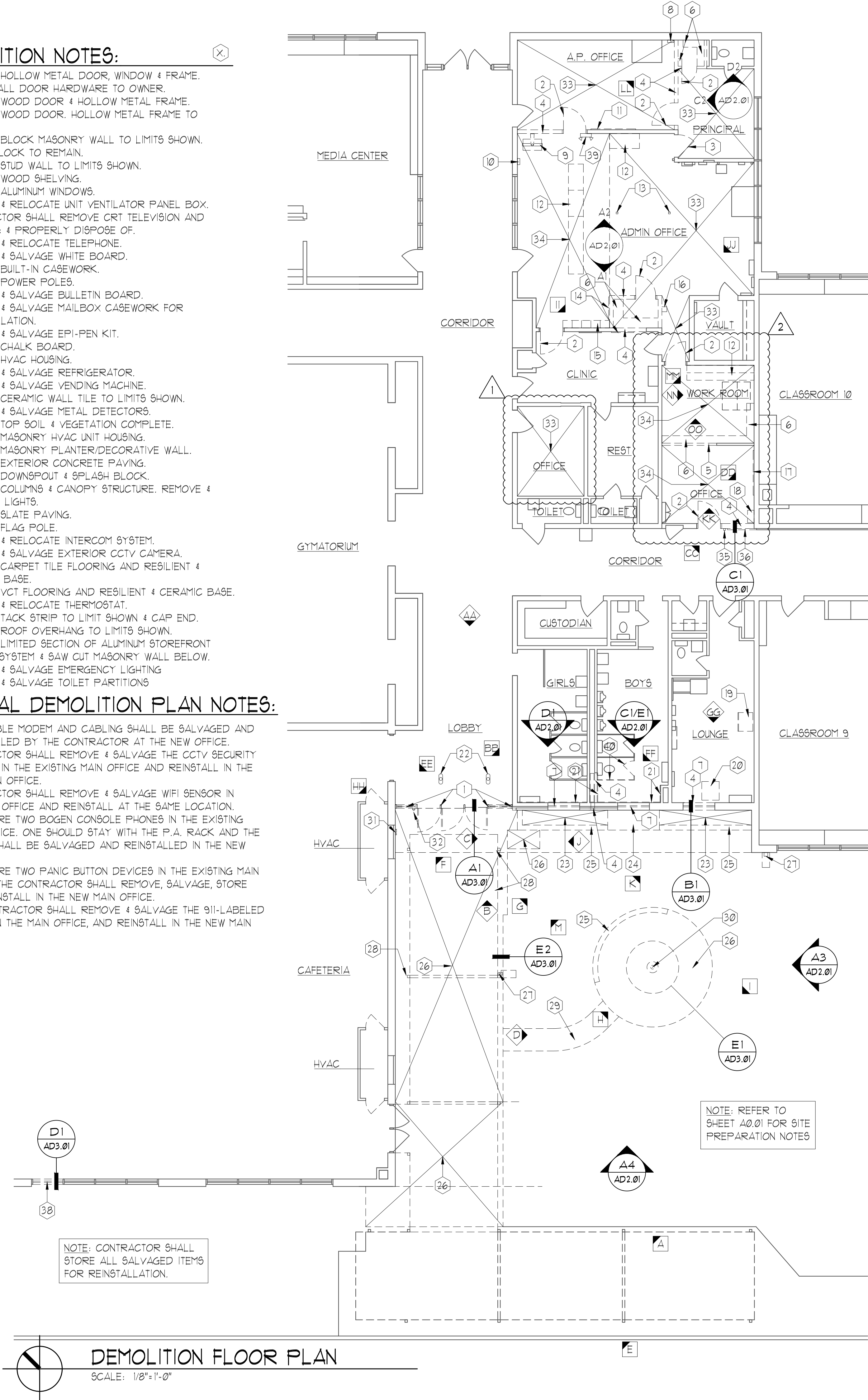
**END OF SECTION 107516**

DEMOLITION NOTES:

1. REMOVE HOLLOW METAL DOOR, WINDOW & FRAME. RETURN ALL DOOR HARDWARE TO OWNER.
2. REMOVE WOOD DOOR & HOLLOW METAL FRAME.
3. REMOVE WOOD DOOR, HOLLOW METAL FRAME TO REMAIN.
4. REMOVE BLOCK MASONRY WALL TO LIMITS SHOWN. TOOTH BLOCK TO REMAIN.
5. REMOVE STUD WALL TO LIMITS SHOWN.
6. REMOVE WOOD SHELVING.
7. REMOVE ALUMINUM WINDOWS.
8. REMOVE & RELOCATE UNIT VENTILATOR PANEL BOX. CONTRACTOR SHALL REMOVE CRT TELEVISION AND MOUNTING & PROPERLY DISPOSE OF.
9. REMOVE & RELOCATE TELEPHONE.
10. REMOVE & SALVAGE WHITE BOARD.
11. REMOVE BUILT-IN CASEWORK.
12. REMOVE POWER POLES.
13. REMOVE & SALVAGE BULLETIN BOARD.
14. REMOVE & SALVAGE MAILBOX CASEWORK FOR REINSTALLATION.
15. REMOVE & SALVAGE EPI-PEN KIT.
16. REMOVE CHALK BOARD.
17. REMOVE HVAC HOUSING.
18. REMOVE & SALVAGE REFRIGERATOR.
19. REMOVE & SALVAGE VENDING MACHINE.
20. REMOVE CERAMIC WALL TILE TO LIMITS SHOWN.
21. REMOVE & SALVAGE METAL DETECTORS.
22. REMOVE TOP SOIL & VEGETATION COMPLETE.
23. REMOVE MASONRY HVAC UNIT HOUSING.
24. REMOVE MASONRY PLANTER/DECORATIVE WALL.
25. REMOVE EXTERIOR CONCRETE PAVING.
26. REMOVE DOWNSPOUT & SPLASH BLOCK.
27. REMOVE COLUMNS & CANOPY STRUCTURE. REMOVE & SALVAGE LIGHTS.
28. REMOVE SLATE PAVING.
29. REMOVE FLAG POLE.
30. REMOVE & RELOCATE INTERCOM SYSTEM.
31. REMOVE & SALVAGE EXTERIOR CCTV CAMERA.
32. REMOVE CARPET TILE FLOORING AND RESILIENT & CERAMIC BASE.
33. REMOVE VCT FLOORING AND RESILIENT & CERAMIC BASE.
34. REMOVE & RELOCATE THERMOSTAT.
35. REMOVE TACK STRIP TO LIMIT SHOWN & CAP END.
36. REMOVE ROOF OVERHANG TO LIMITS SHOWN.
37. REMOVE LIMITED SECTION OF ALUMINUM STOREFRONT WINDOW SYSTEM & SAW CUT MASONRY WALL BELOW.
38. REMOVE & SALVAGE EMERGENCY LIGHTING.
39. REMOVE & SALVAGE TOILET PARTITIONS.
40. REMOVE & SALVAGE TOILET PARTITIONS.

GENERAL DEMOLITION PLAN NOTES:

1. COX CABLE MODEM AND CABLING SHALL BE SALVAGED AND REINSTALLED BY THE CONTRACTOR AT THE NEW OFFICE.
2. CONTRACTOR SHALL REMOVE & SALVAGE THE CCTV SECURITY CAMERA IN THE EXISTING MAIN OFFICE AND REINSTALL IN THE NEW MAIN OFFICE.
3. CONTRACTOR SHALL REMOVE & SALVAGE WIFI SENSOR IN EXISTING OFFICE AND REINSTALL AT THE SAME LOCATION.
4. THERE ARE TWO BOGEN CONSOLE PHONES IN THE EXISTING MAIN OFFICE. ONE SHOULD STAY WITH THE P.A. RACK AND THE OTHER SHALL BE SALVAGED AND REINSTALLED IN THE NEW OFFICE.
5. THERE ARE TWO PANIC BUTTON DEVICES IN THE EXISTING MAIN OFFICE. THE CONTRACTOR SHALL REMOVE, SALVAGE, STORE AND REINSTALL IN THE NEW MAIN OFFICE.
6. THE CONTRACTOR SHALL REMOVE & SALVAGE THE 911-LABELED PHONE IN THE MAIN OFFICE, AND REINSTALL IN THE NEW MAIN OFFICE.

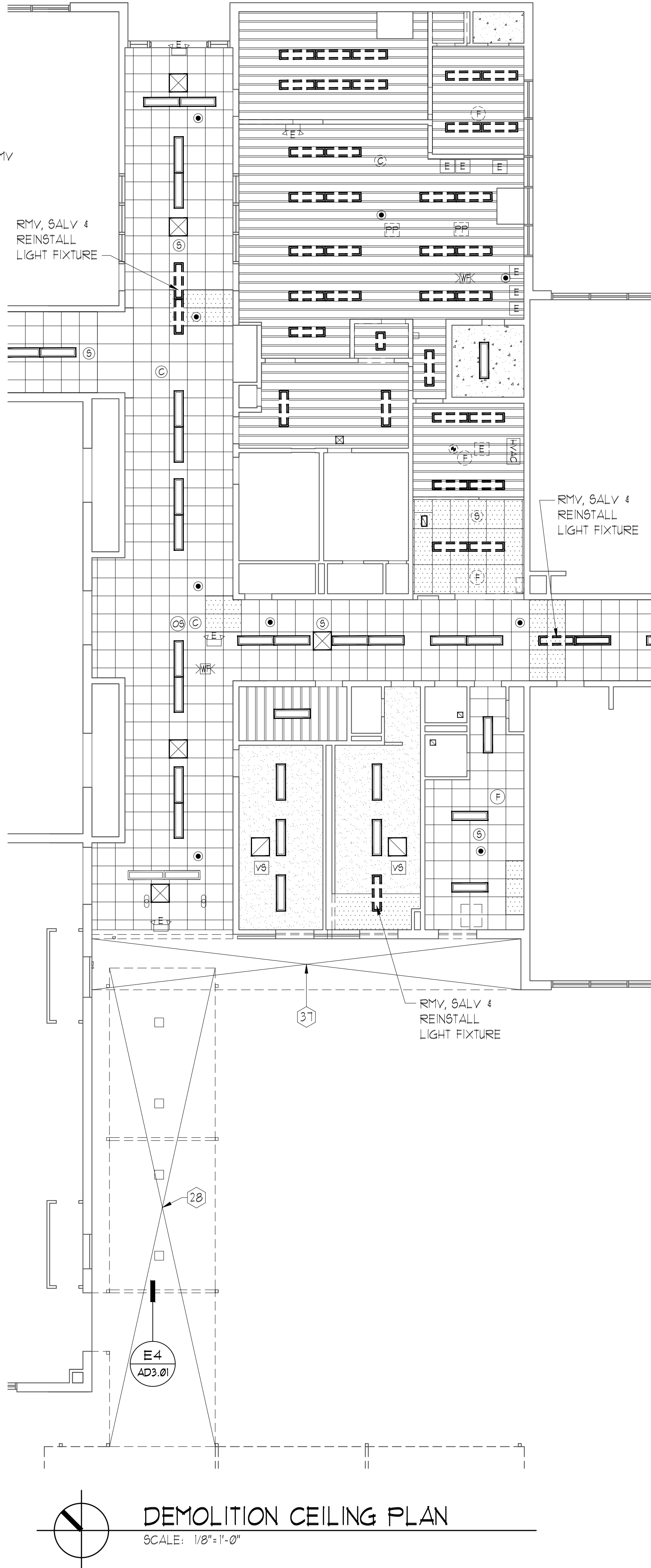


DEMOLITION CEILING LEGEND:

- 2X2 CEILING GRID TO REMAIN
- RMV 2X2 CEILING GRID
- CONCRETE PANEL CEILING TO REMAIN
- GWB CEILING TO REMAIN
- EXPOSED FENESTRA LS DECK JOISTS & RMV CEILING PANELS BETWEEN THEM
- 1X4 LIGHT FIXTURE TO REMAIN
- REMOVE 1X4 LIGHT FIXTURE
- REMOVE & SALVAGE LIGHT FIXTURE
- SMOKE SENSOR TO REMAIN
- REMOVE & SALVAGE SMOKE SENSOR
- SUPPLY AIR DIFFUSER TO REMAIN
- RETURN AIR DIFFUSER TO REMAIN
- REMOVE RETURN AIR DIFFUSER
- CCTV CAMERA TO REMAIN
- REMOVE & SALVAGE CCTV SENSOR
- SPEAKER TO REMAIN
- REMOVE & SALVAGE SPEAKER
- WIFI SENSOR TO REMAIN
- REMOVE & SALVAGE WIFI SENSOR
- ELECTRICAL OUTLET/CONDUIT TO REMAIN
- REMOVE ELECTRICAL OUTLET/CONDUIT
- EMERGENCY LIGHT TO REMAIN
- REMOVE & SALVAGE EMERGENCY LIGHT
- FIRE ALARM STROBE TO REMAIN
- REMOVE & SALVAGE FIRE ALARM STROBE
- OCCUPANCY SENSOR TO REMAIN
- REMOVE & SALVAGE OCCUPANCY SENSOR
- REMOVE POWER POLE
- WALL-MOUNTED SPEAKER TO REMAIN
- VALVE BOX TO REMAIN
- HVAC UNIT TO REMAIN

DEMOLITION PLAN LEGEND:

- REMOVE BLOCK WALL TO LIMITS SHOWN
- REMOVE WALL MOUNTED OBJECTS
- REMOVE SEGMENT OF WINDOW GLAZING & MULLION
- REMOVE DOOR AND FRAME
- DOOR TO REMAIN
- REMOVE & SALVAGE SMART BOARD
- REMOVE WALL MOUNTED TELEVISION
- REMOVE WINDOW & FRAME
- WALL TO REMAIN
- PHOTO REFERENCE
- DEMOLITION WORK NOTE SYMBOL



HUDSON+ASSOCIATES  
ARCHITECTS  
120 WEST QUEENS WAY SUITE 201  
HAMPTON, VA  
(757) 722-1964  
23669

SECURITY VESTIBULE &  
OFFICE ADDITION &  
& ALTERATIONS FOR  
YATES ELEMENTARY SCHOOL

73 MAXWELL LANE  
NEWPORT NEWS, VIRGINIA 23606

VIRGINIA DEPARTMENT OF  
EDUCATION PROJECT NO.  
117-506-00-102

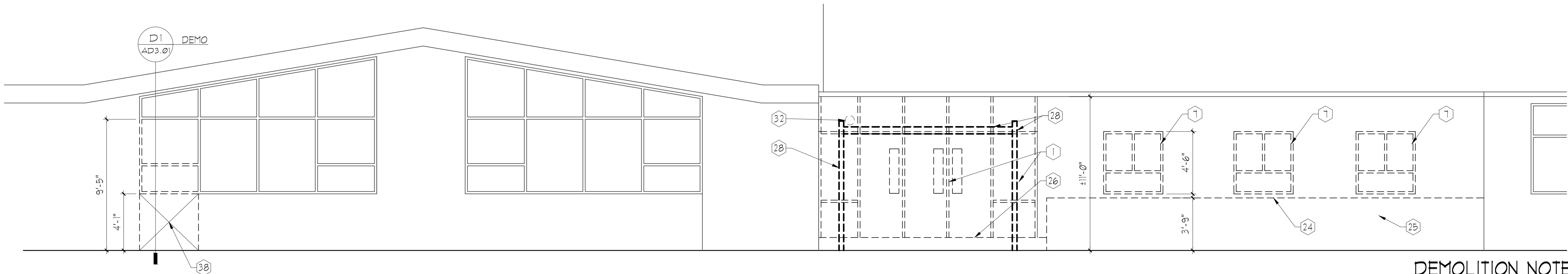


DECEMBER 30, 2024	DATE
1 REVISION #1	3/17/25
2 REVISION #2	3/18/25

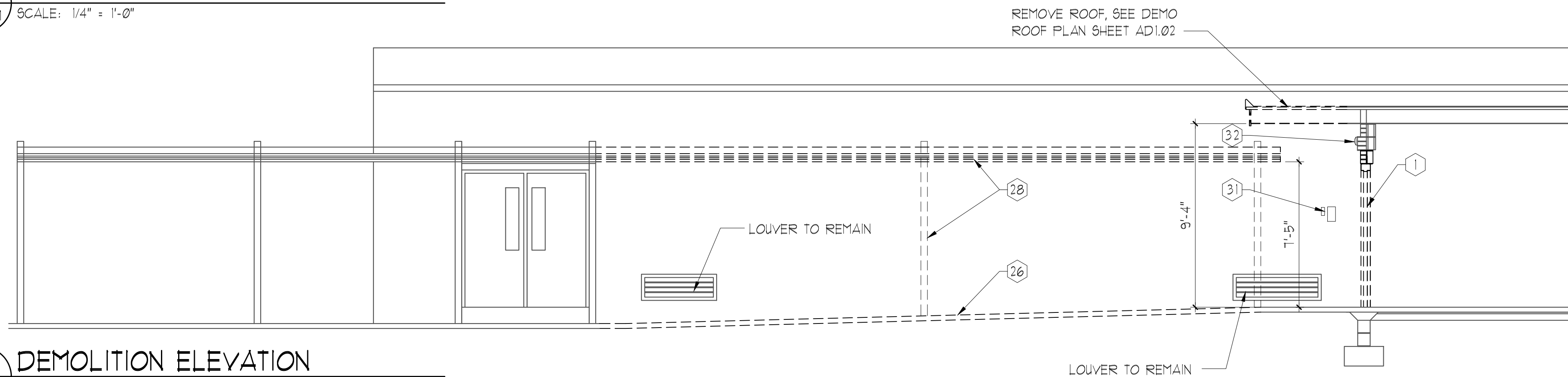
DEMOLITION FLOOR  
PLAN & REFLECTED  
CEILING PLAN

JOB NUMBER 2312

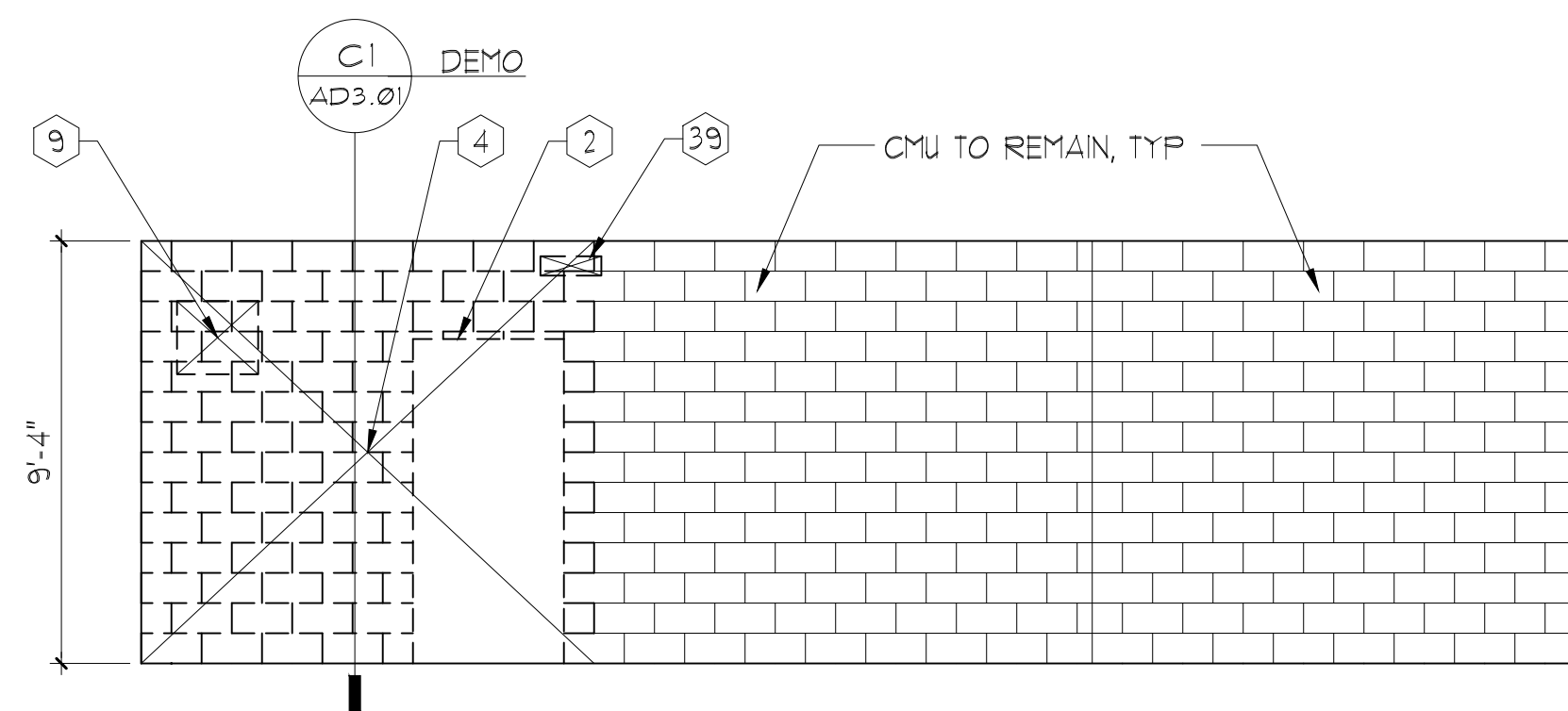
AD1.01



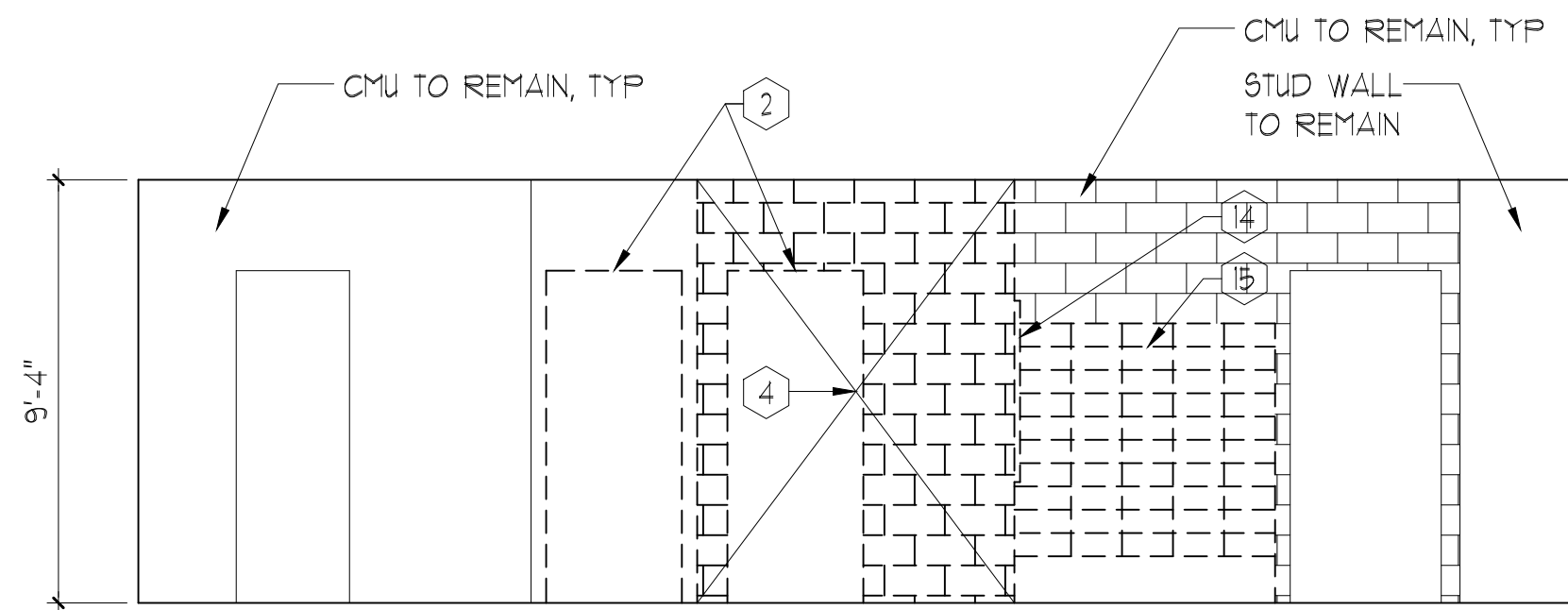
A4  
AD2.01  
DEMOLITION ELEVATION  
SCALE: 1/4" = 1'-0"



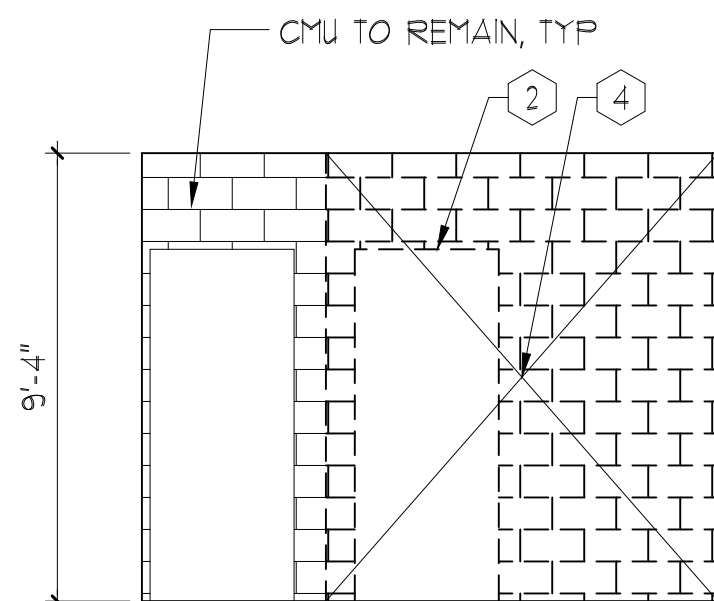
A3  
AD2.01  
DEMOLITION ELEVATION  
SCALE: 1/4" = 1'-0"



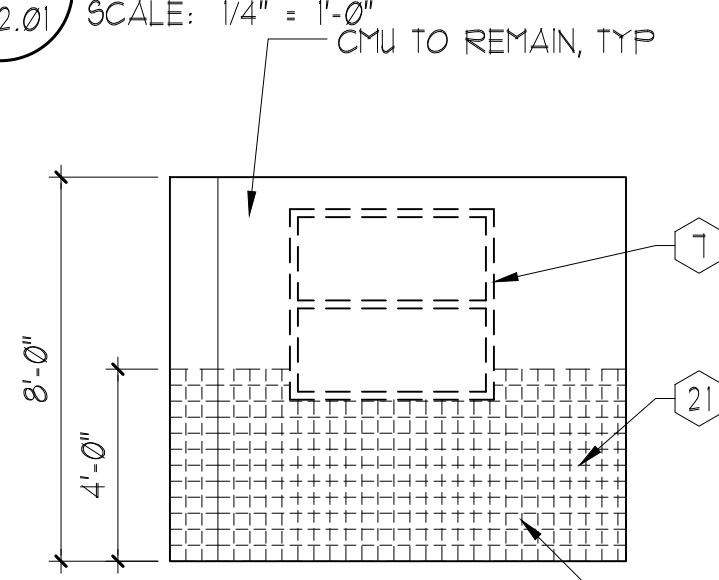
A2  
AD2.01  
DEMOLITION ELEVATION  
SCALE: 1/4" = 1'-0"



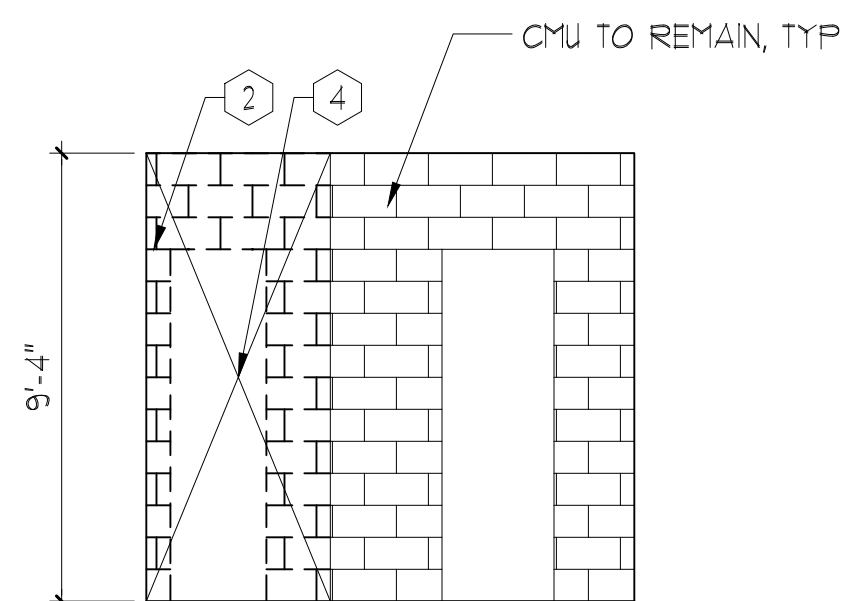
A1  
AD2.01  
DEMOLITION ELEVATION  
SCALE: 1/4" = 1'-0"



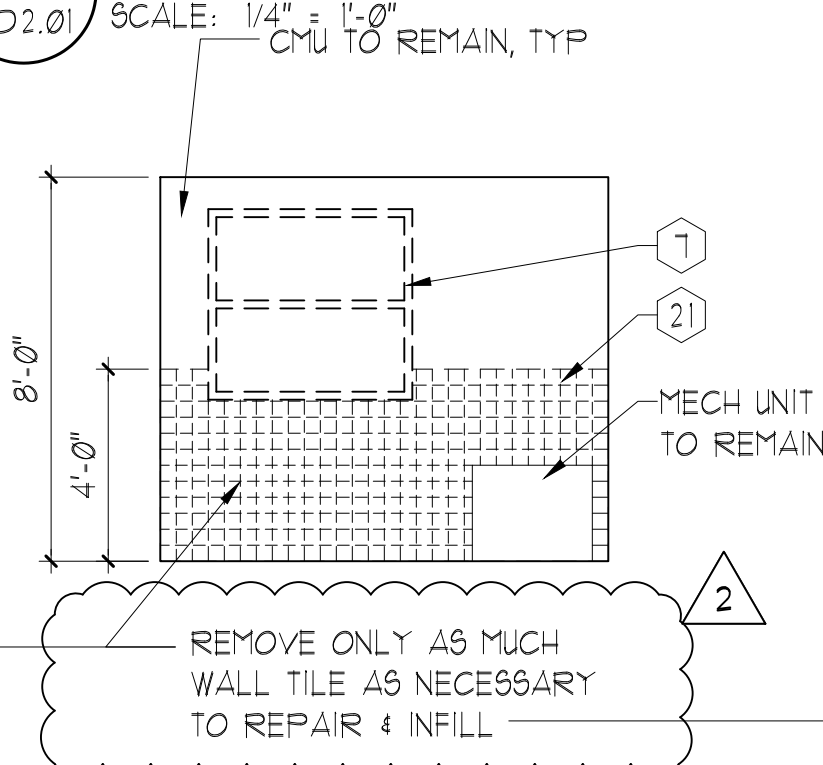
C2  
AD2.01  
DEMOLITION ELEVATION  
SCALE: 1/4" = 1'-0"



C1  
AD2.01  
DEMOLITION ELEVATION  
SCALE: 1/4" = 1'-0"



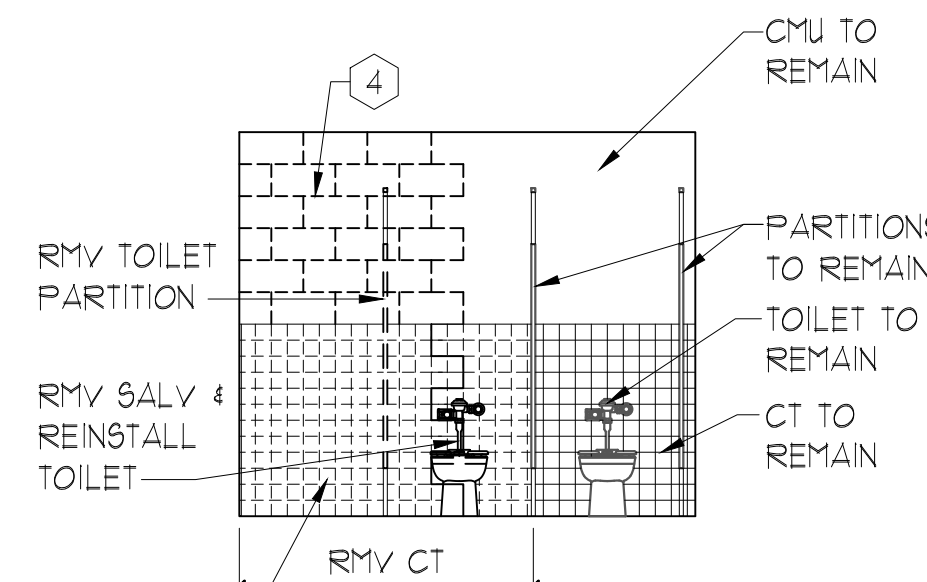
D2  
AD2.01  
DEMOLITION ELEVATION  
SCALE: 1/4" = 1'-0"



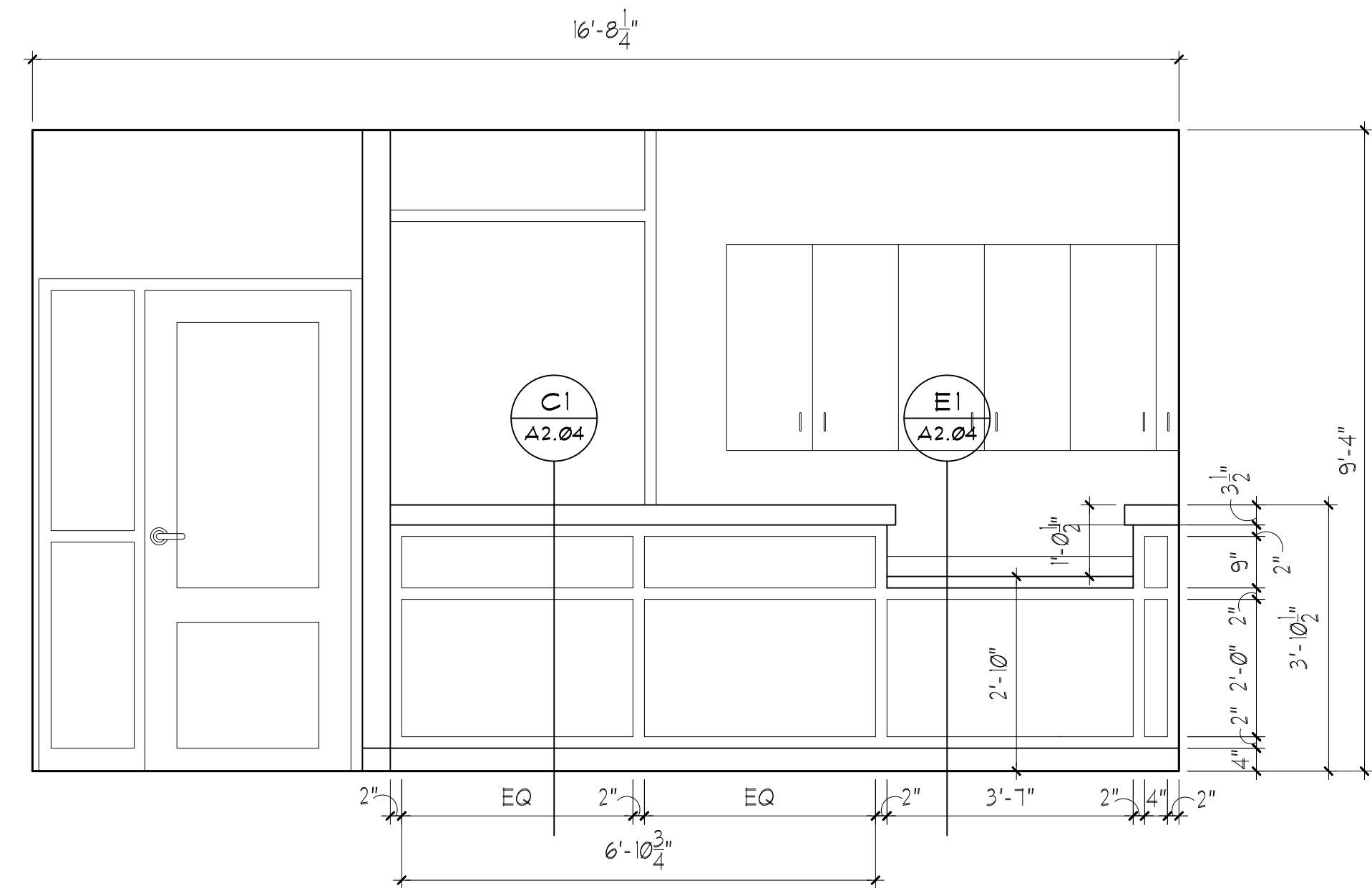
D1  
AD2.01  
DEMOLITION ELEVATION  
SCALE: 1/4" = 1'-0"

## DEMOLITION NOTES:

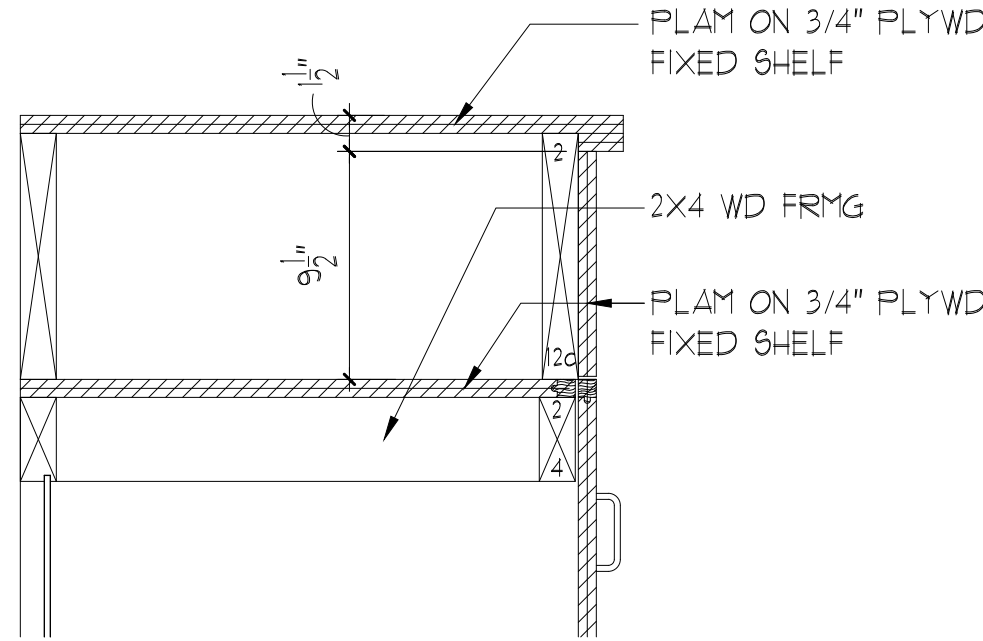
1. REMOVE HOLLOW METAL DOOR, WINDOW & FRAME. RETURN ALL DOOR HARDWARE TO OWNER.
2. REMOVE WOOD DOOR & HOLLOW METAL FRAME.
3. REMOVE WOOD DOOR, HOLLOW METAL FRAME TO REMAIN.
4. REMOVE BLOCK MASONRY WALL TO LIMITS SHOWN. TOOTH BLOCK TO REMAIN.
5. REMOVE STUD WALL TO LIMITS SHOWN.
6. REMOVE WOOD SHELVEING.
7. REMOVE ALUMINUM WINDOWS.
8. REMOVE & RELOCATE UNIT VENTILATOR PANEL BOX.
9. CONTRACTOR SHALL REMOVE CRT TELEVISION AND MOUNTING & PROPERLY DISPOSE OF.
10. REMOVE & RELOCATE TELEPHONE.
11. REMOVE & SALVAGE WHITE BOARD.
12. REMOVE BUILT-IN CASEWORK.
13. REMOVE POWER POLES.
14. REMOVE & SALVAGE BULLETIN BOARD.
15. REMOVE & SALVAGE MAILBOX CASEWORK FOR REINSTALLATION.
16. REMOVE & SALVAGE EPI-PEN KIT.
17. REMOVE CHALK BOARD.
18. REMOVE HVAC HOUSING.
19. REMOVE & SALVAGE REFRIGERATOR.
20. REMOVE & SALVAGE VENDING MACHINE.
21. REMOVE CERAMIC WALL TILE TO LIMITS SHOWN.
22. REMOVE & SALVAGE METAL DETECTORS.
23. REMOVE TOP SOIL & VEGETATION COMPLETE.
24. REMOVE MASONRY HVAC UNIT HOUSING.
25. REMOVE MASONRY PLANTER/DECORATIVE WALL.
26. REMOVE EXTERIOR CONCRETE PAVING.
27. REMOVE DOWNSPOUT & SPLASH BLOCK.
28. REMOVE COLUMNS & CANOPY STRUCTURE. REMOVE & SALVAGE LIGHTS.
29. REMOVE SLATE PAVING.
30. REMOVE FLAG POLE.
31. REMOVE & RELOCATE INTERCOM SYSTEM.
32. REMOVE & SALVAGE EXTERIOR CCTV CAMERA.
33. REMOVE CARPET TILE FLOORING AND RESILIENT & CERAMIC BASE.
34. REMOVE VCT FLOORING AND RESILIENT & CERAMIC BASE.
35. REMOVE & RELOCATE THERMOSTAT.
36. REMOVE TACK STRIP TO LIMIT SHOWN & CAP END.
37. REMOVE ROOF OVERHANG TO LIMITS SHOWN.
38. REMOVE LIMITED SECTION OF ALUMINUM STOREFRONT WINDOW SYSTEM & SAW CUT MASONRY WALL BELOW.
39. REMOVE & SALVAGE EMERGENCY LIGHTING
40. REMOVE & SALVAGE TOILET PARTITIONS



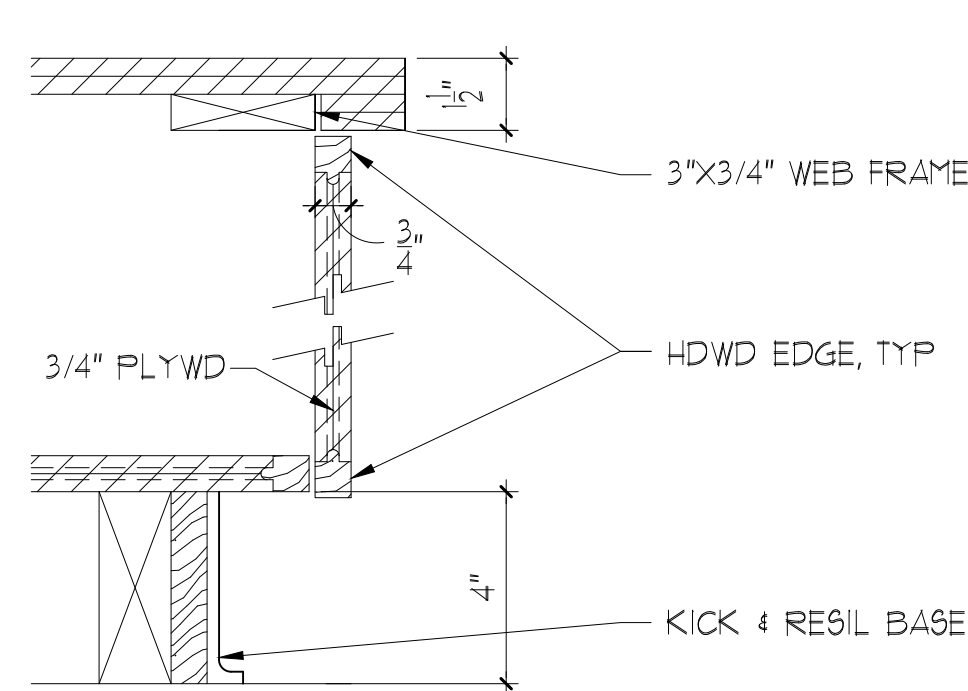
E1  
AD2.01  
DEMOLITION ELEVATION  
SCALE: 1/4" = 1'-0"



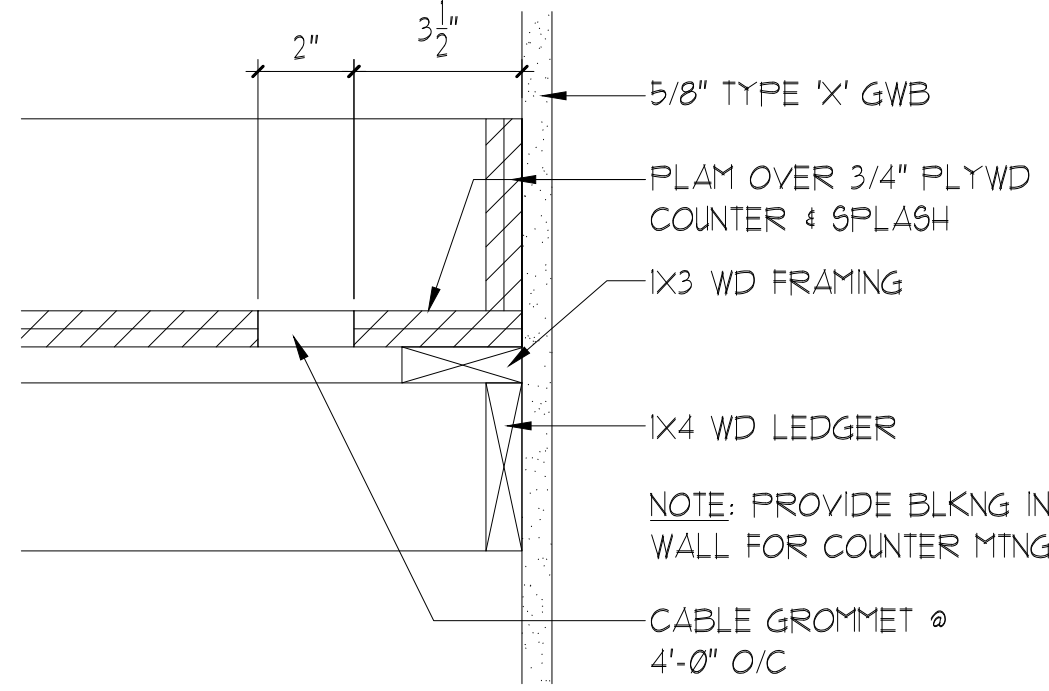
A4 ELEVATION  
SCALE: 1/2"=1'-0" ADMIN OFFICE



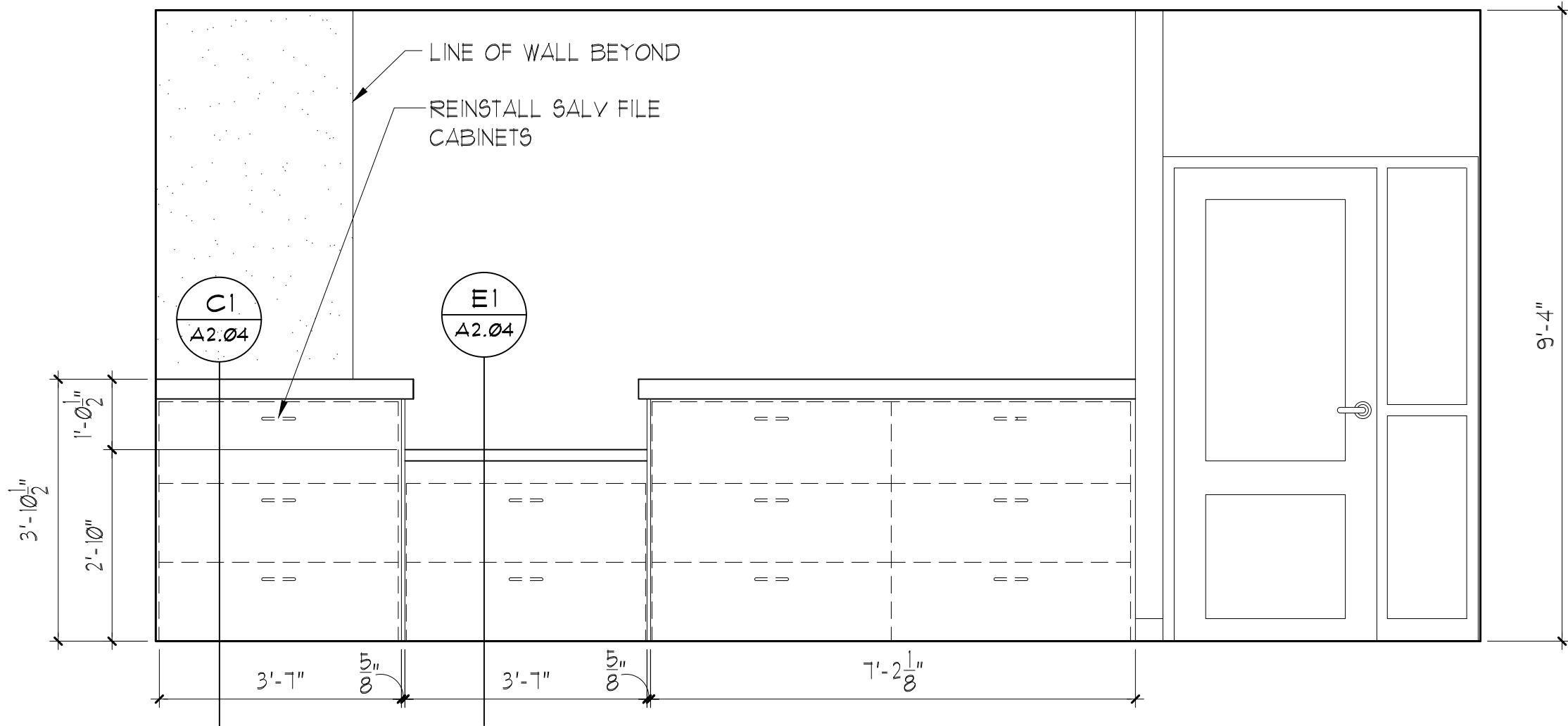
C4 DETAIL  
SCALE: 1-1/2"=1'-0"



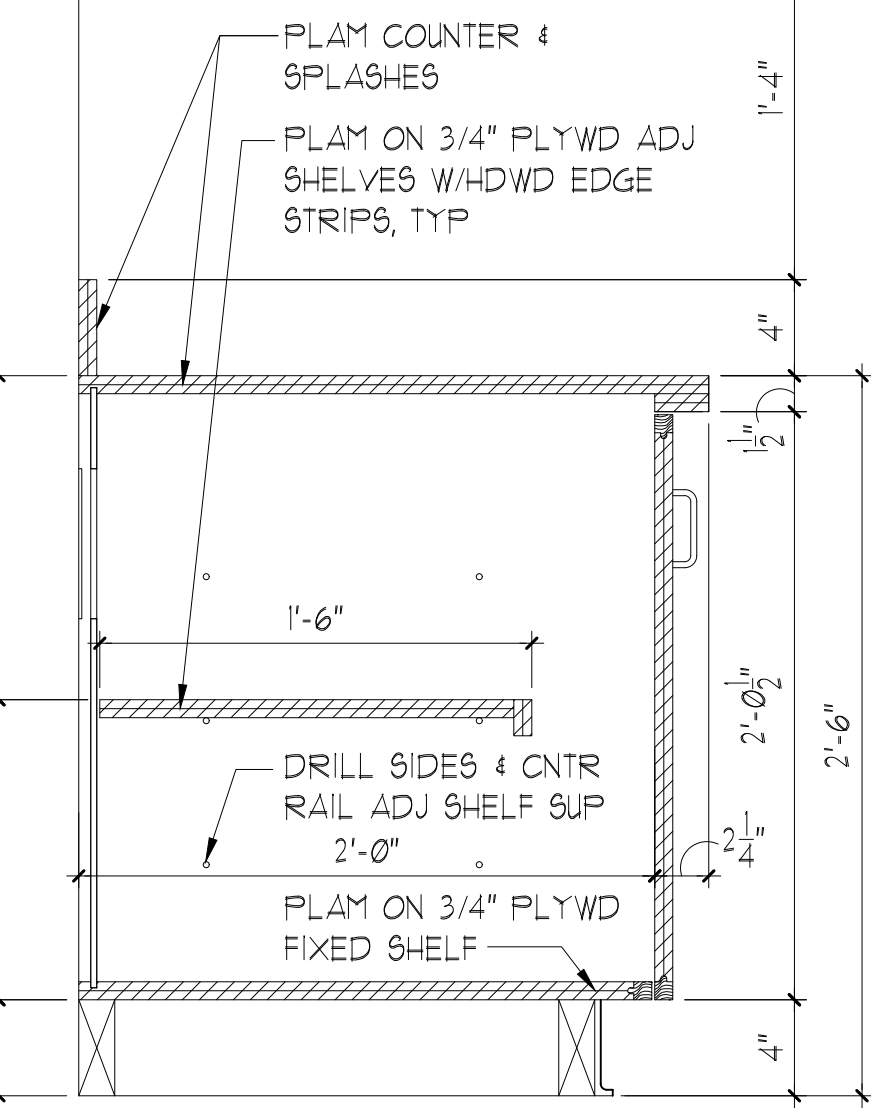
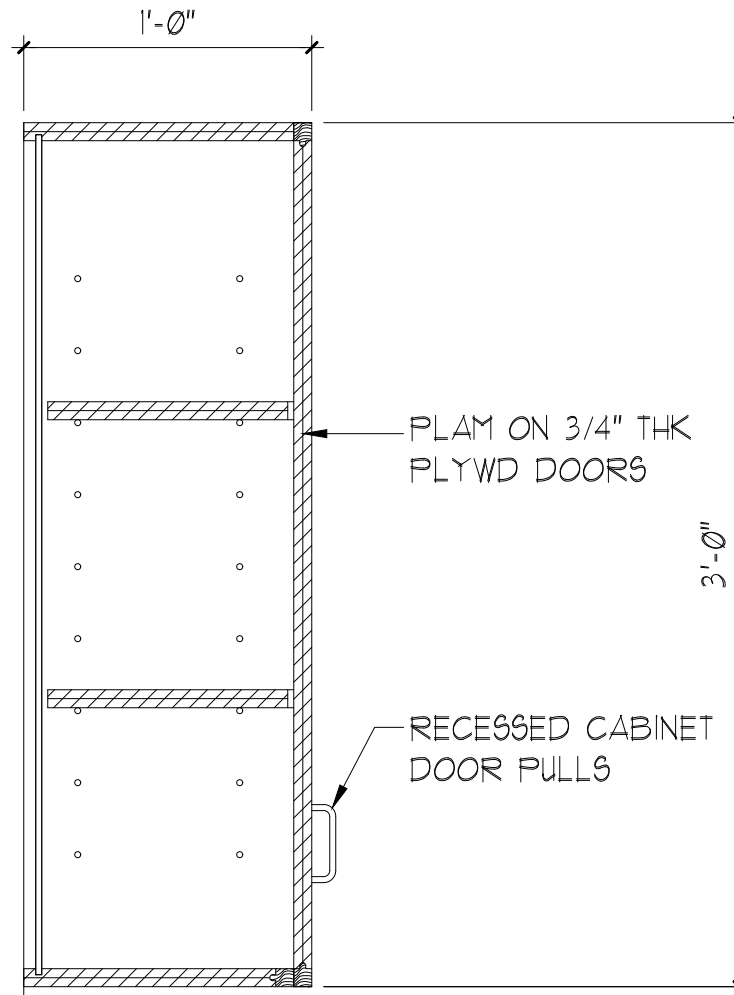
D4 DETAIL  
SCALE: 3"=1'-0" TYPICAL CABINET BASE



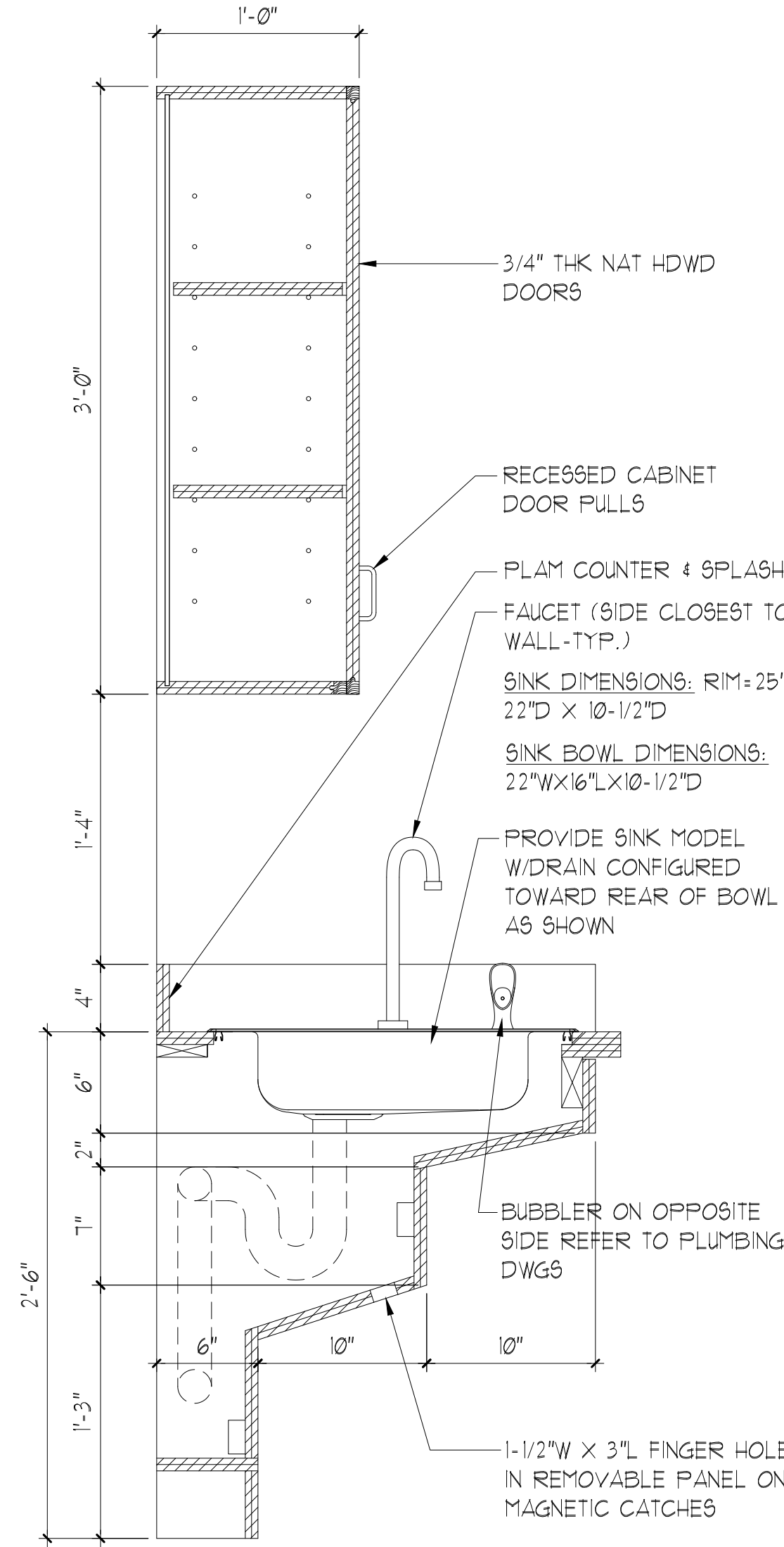
E4 DETAIL  
SCALE: 3"=1'-0"



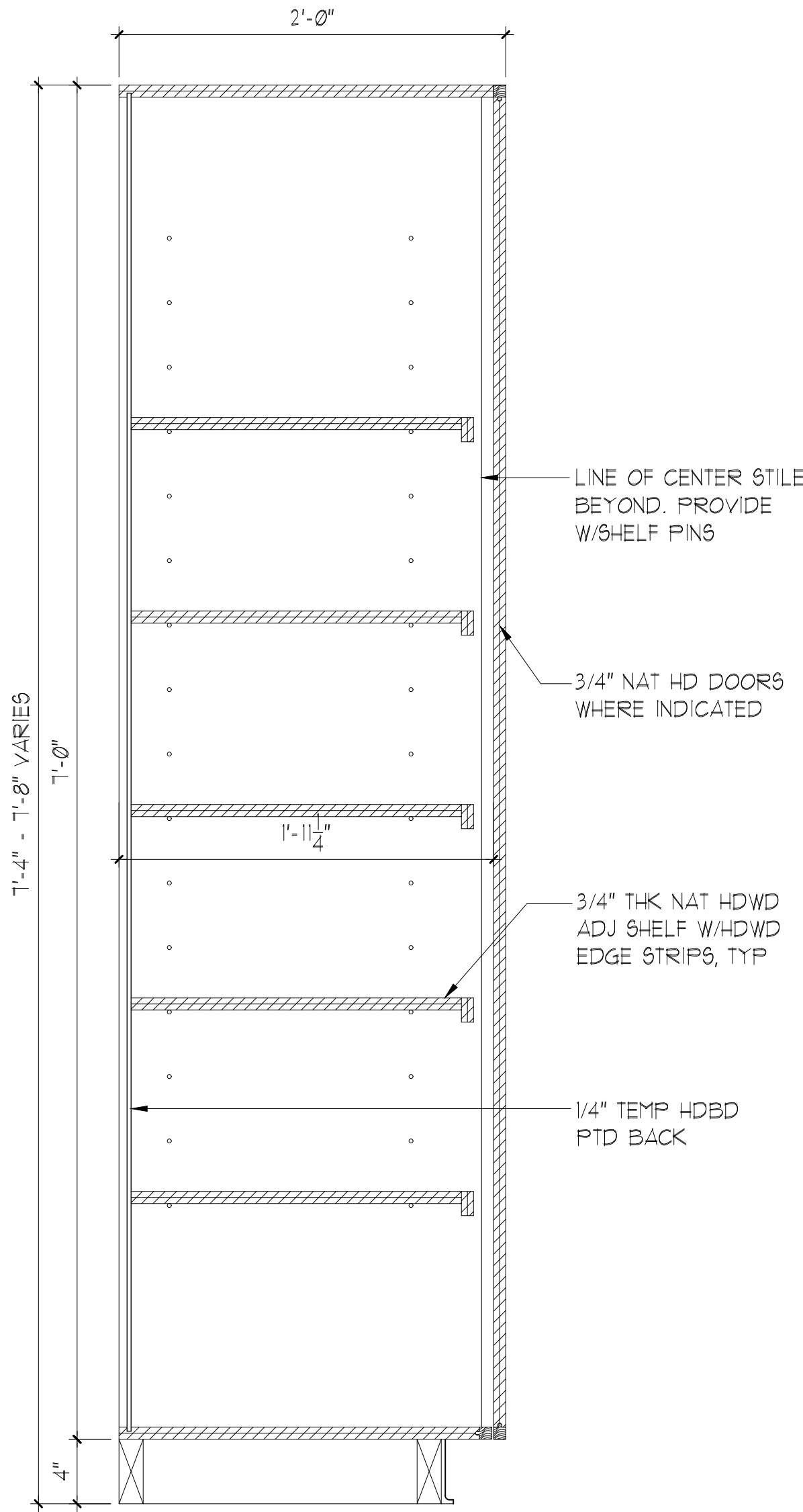
A2 ELEVATION  
SCALE: 1/2"=1'-0" ADMIN OFFICE



C1 DETAIL  
SCALE: 1-1/2"=1'-0"



D1 DETAIL  
SCALE: 1-1/2"=1'-0"

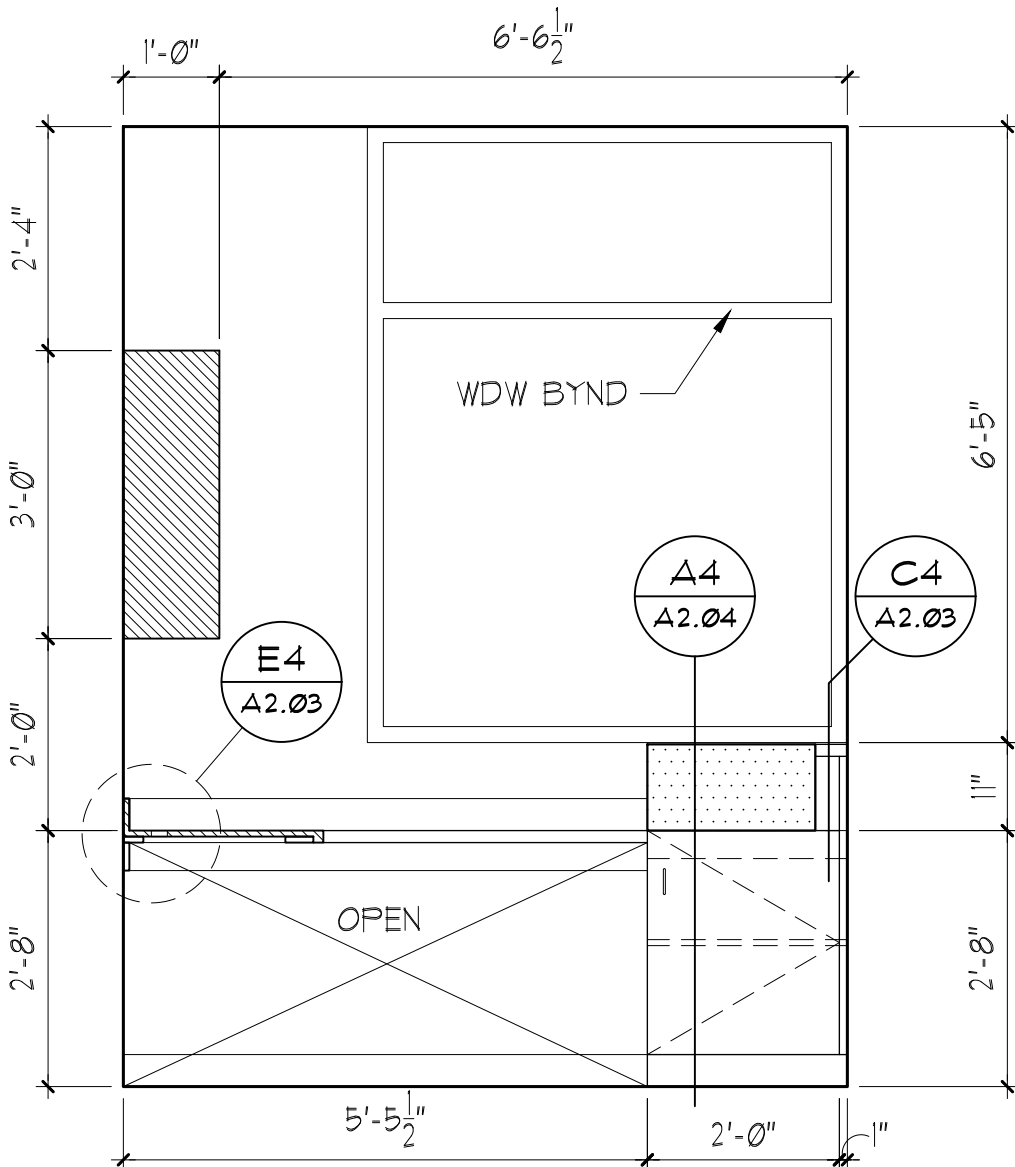


E1 DETAIL  
SCALE: 1-1/2"=1'-0"

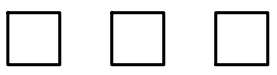
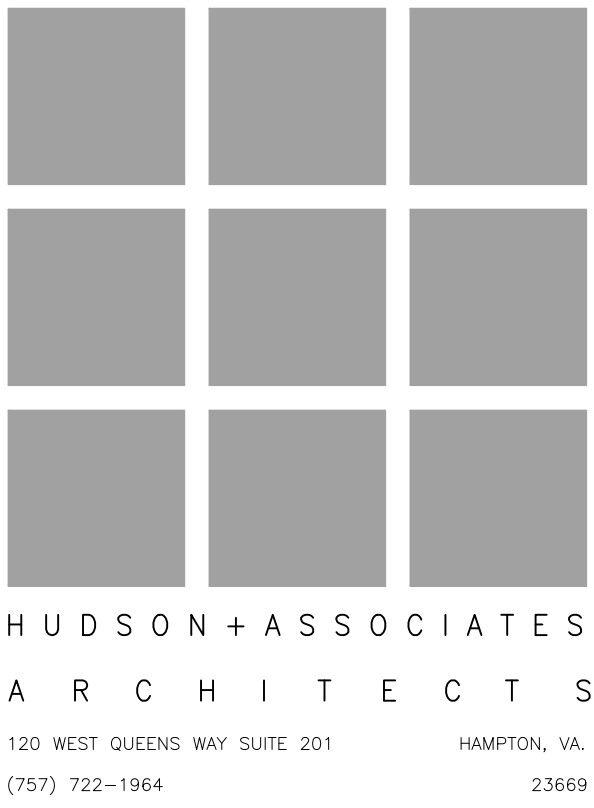
REVISE ALL NOTATIONS & REFERENCES TO PLASTIC LAMINATE (PLAM) COUNTERTOPS TO FABRICATED SOLID SURFACE MATERIAL COUNTERTOPS

CASEWORK NOTES:

1. ALL EXPOSED MATERIAL SHALL BE PLASTIC LAMINATE ON HARDWOOD PLYWOOD. ALL EXPOSED EDGES WILL RECEIVE PLASTIC LAMINATE EDGING TO MATCH THE ADJACENT SURFACES, UNLESS OTHERWISE NOTED. SEMI-EXPOSED SURFACES SHALL BE PAINTED OR MELAMINE FILM ON HARDWOOD PLYWOOD.
2. ALL CABINETS TO BE FLUSH OVERLAY CONSTRUCTION CONFORMING TO AIA CUSTOM QUALITY STANDARDS, UNLESS OTHERWISE NOTED.
3. ALL COUNTER TOPS, SPLASHES AND SHELVES SHALL BE PLASTIC LAMINATE ON PLYWOOD UNLESS OTHERWISE NOTED. SPLASHES SHALL BE 4" TALL, UNLESS OTHERWISE NOTED. COORDINATE ELECTRICAL ROUGH-INS.
4. PROVIDE HARDWOOD PLYWOOD KICKS AT ALL CASEWORK. INSTALL RESILIENT BASE OVER THE KICK AS SHOWN IN THE FINISH SCHEDULE.
5. PROVIDE FINISH ENDS AND BACKS WHERE CASEWORK IS EXPOSED.



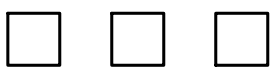
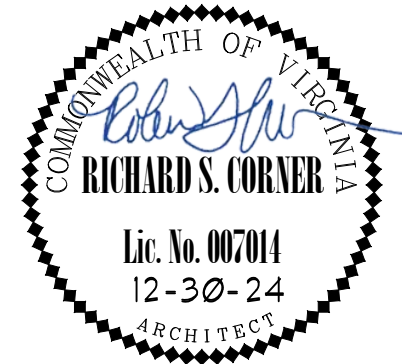
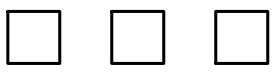
A1 ELEVATION  
SCALE: 1/2"=1'-0" S.R.O.



SECURITY VESTIBULE &  
OFFICE ADDITION &  
& ALTERATIONS FOR  
YATES ELEMENTARY SCHOOL

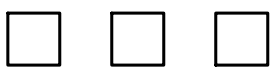
73 MAXWELL LANE  
NEWPORT NEWS, VIRGINIA 23606

VIRGINIA DEPARTMENT OF  
EDUCATION PROJECT NO.  
11T-506-00-102



DECEMBER 30, 2024

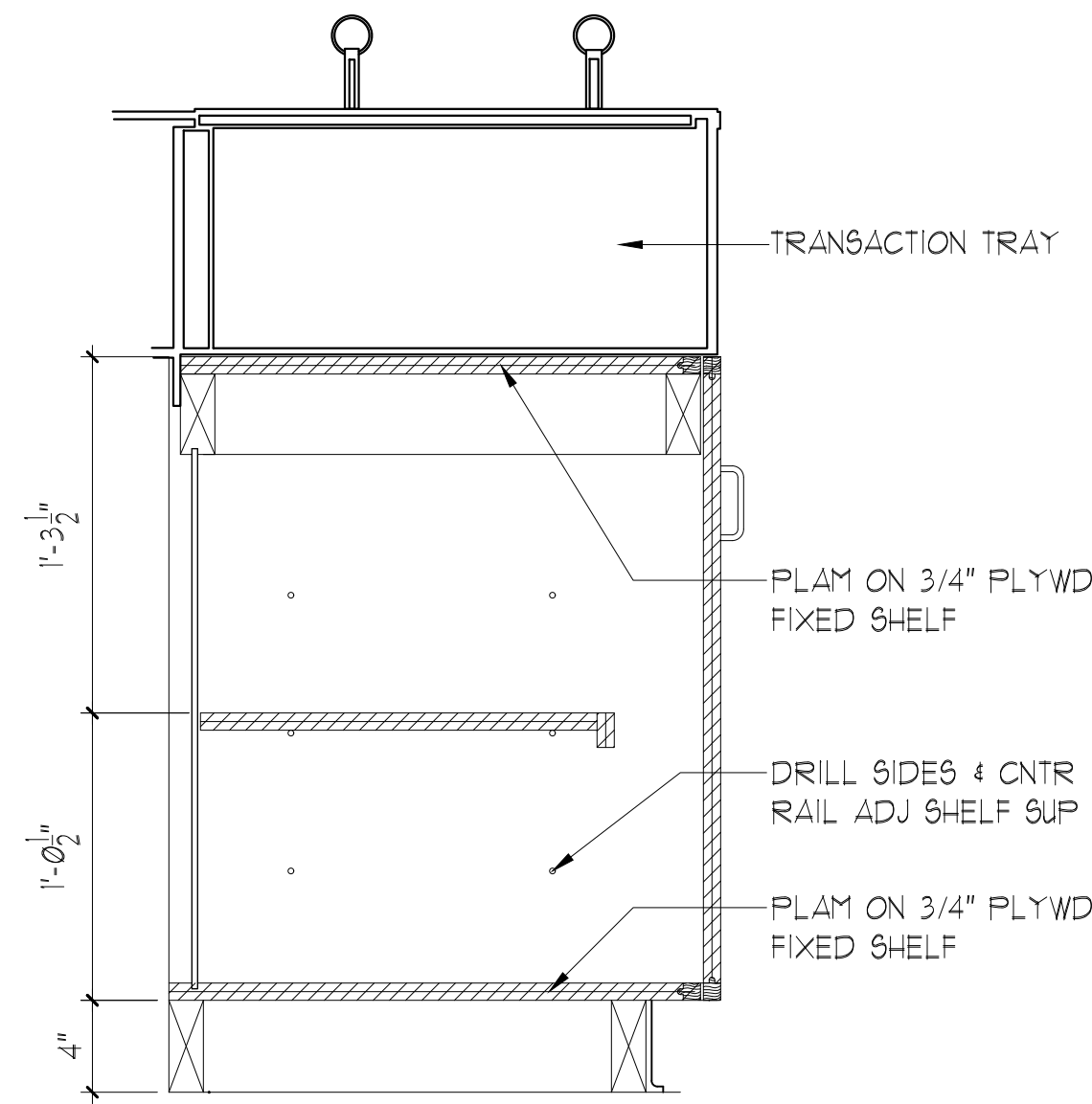
REV	DESCRIPTION	DATE
1	REVISION #1	3/11/25
2	REVISION #2	3/18/25



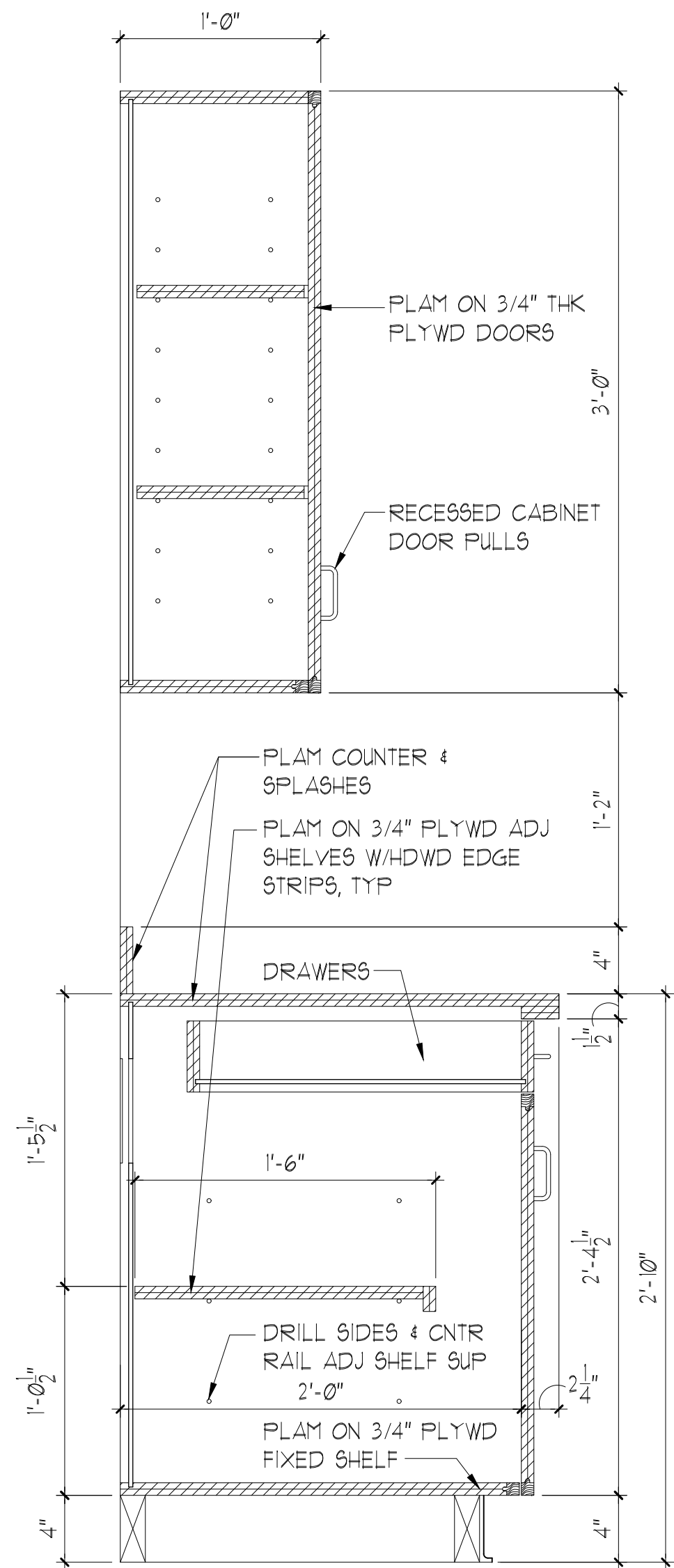
CASEWORK  
ELEVATIONS &  
DETAILS

JOB NUMBER 2312

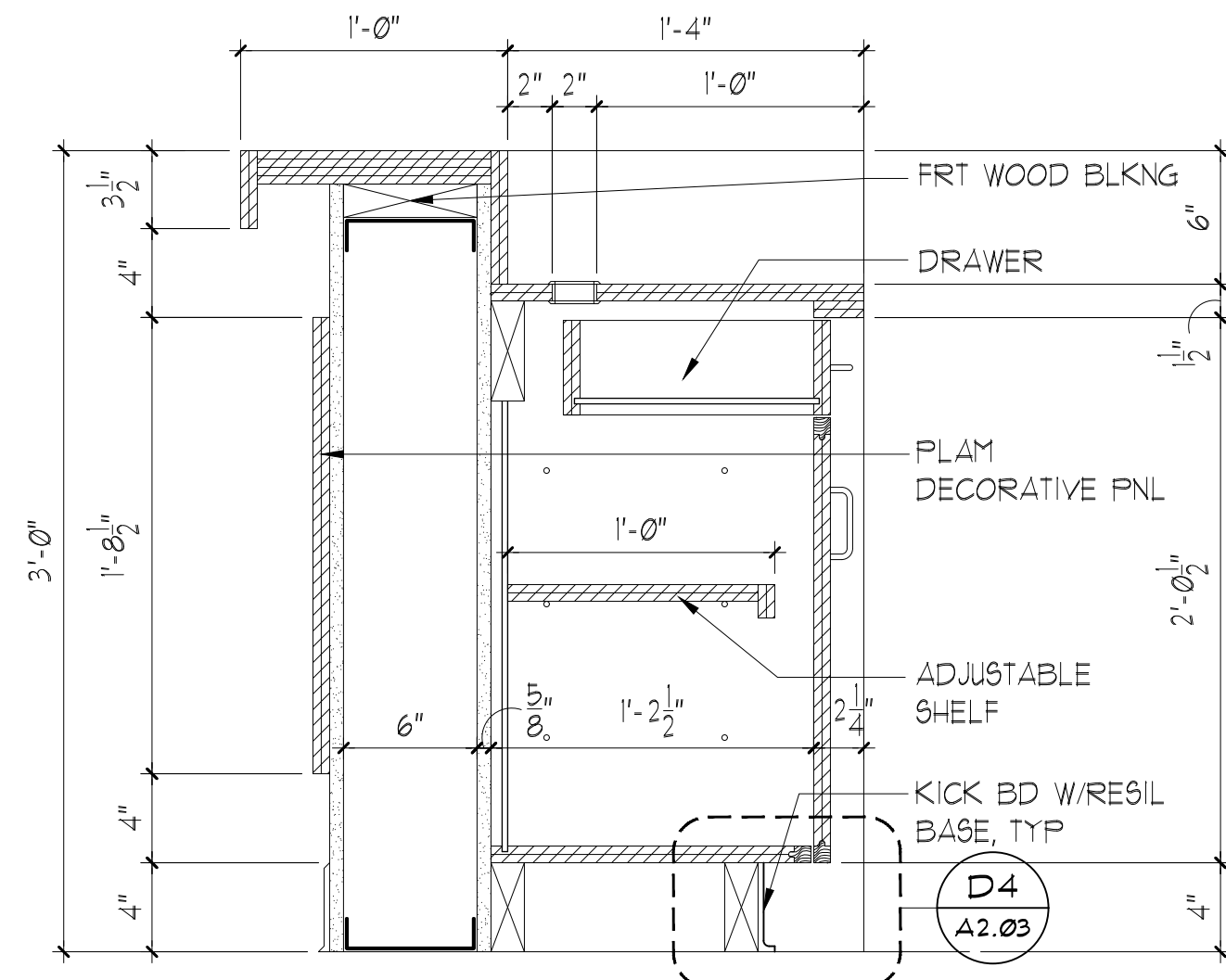
A2.03



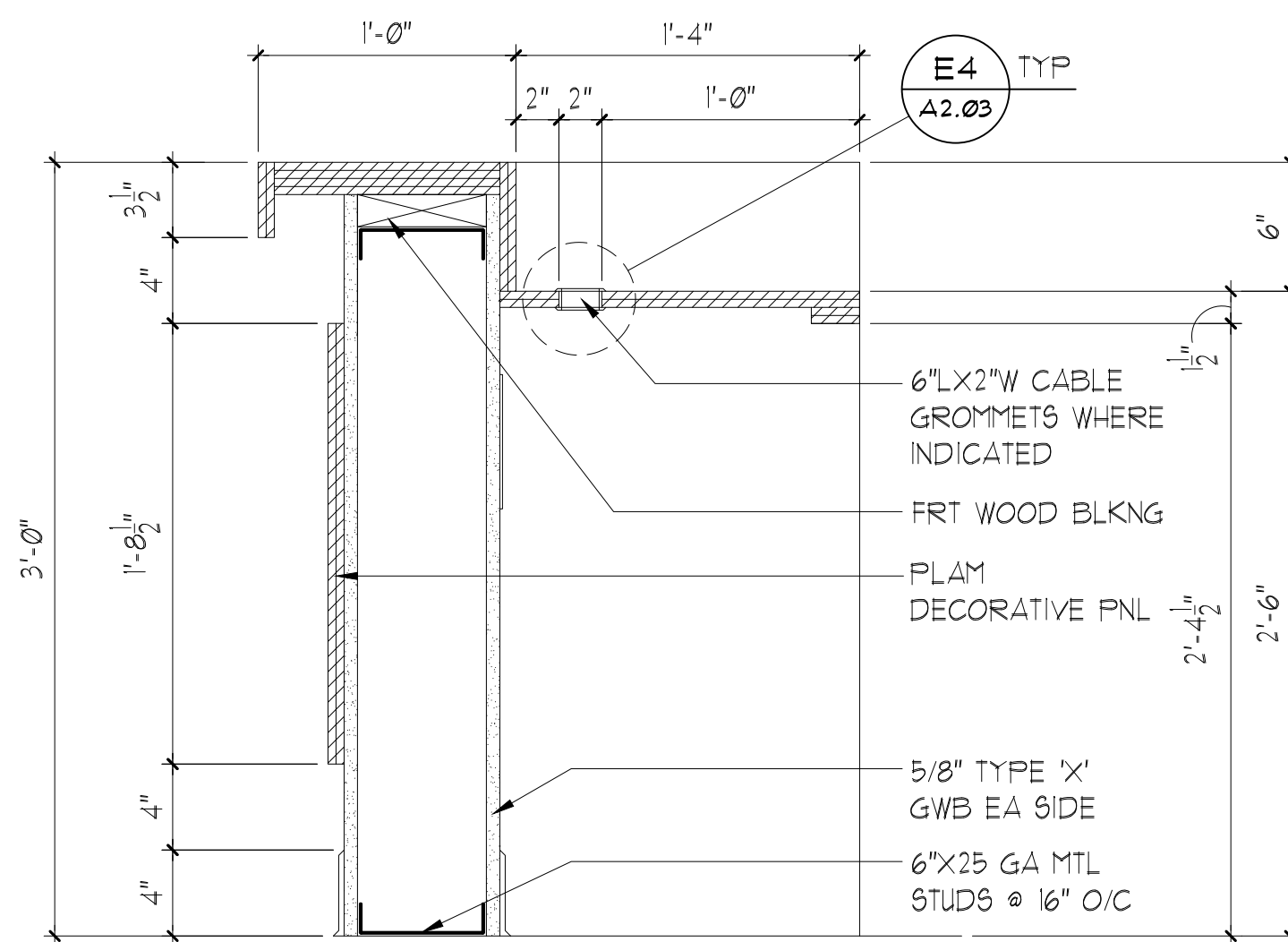
**A4 DETAIL**  
SCALE: 1-1/2"=1'-0"



**A1 DETAIL**  
SCALE: 1-1/2"=1'-0"

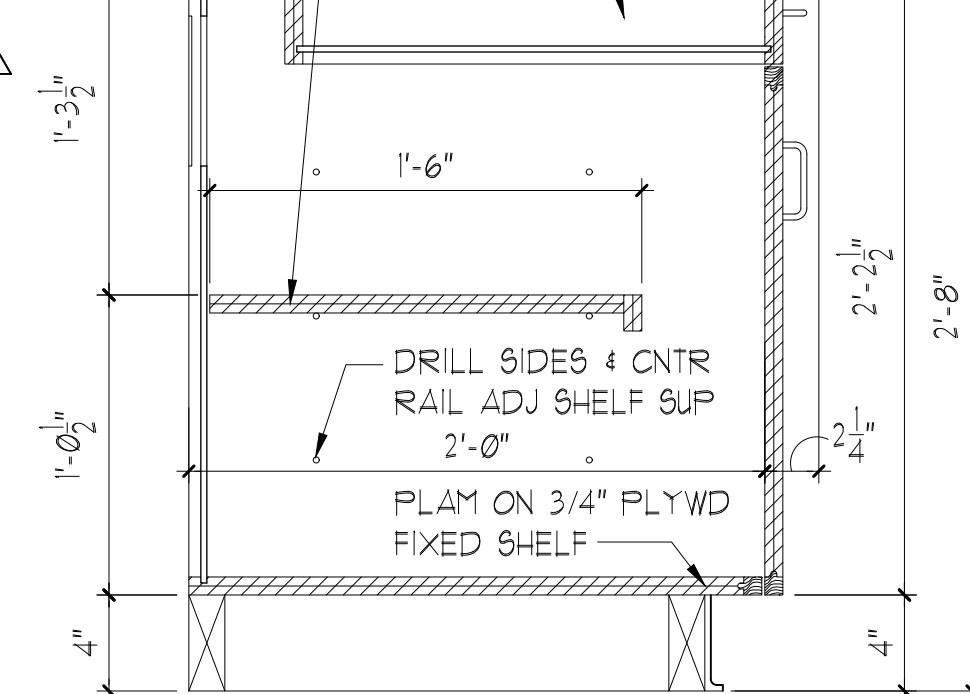


**B2 DETAIL**  
SCALE: 1-1/2"=1'-0"

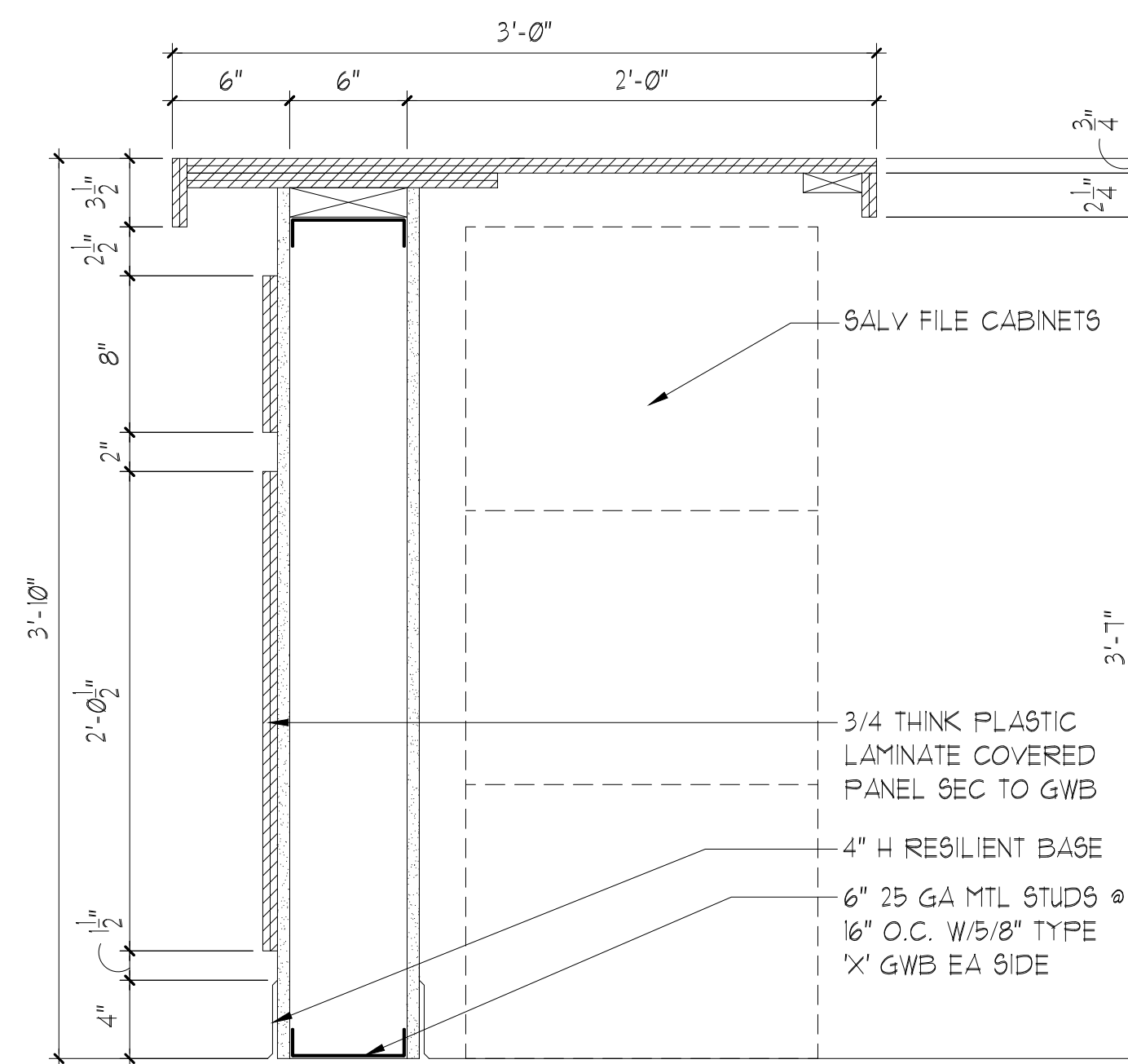


**B1 DETAIL**  
SCALE: 1-1/2"=1'-0"

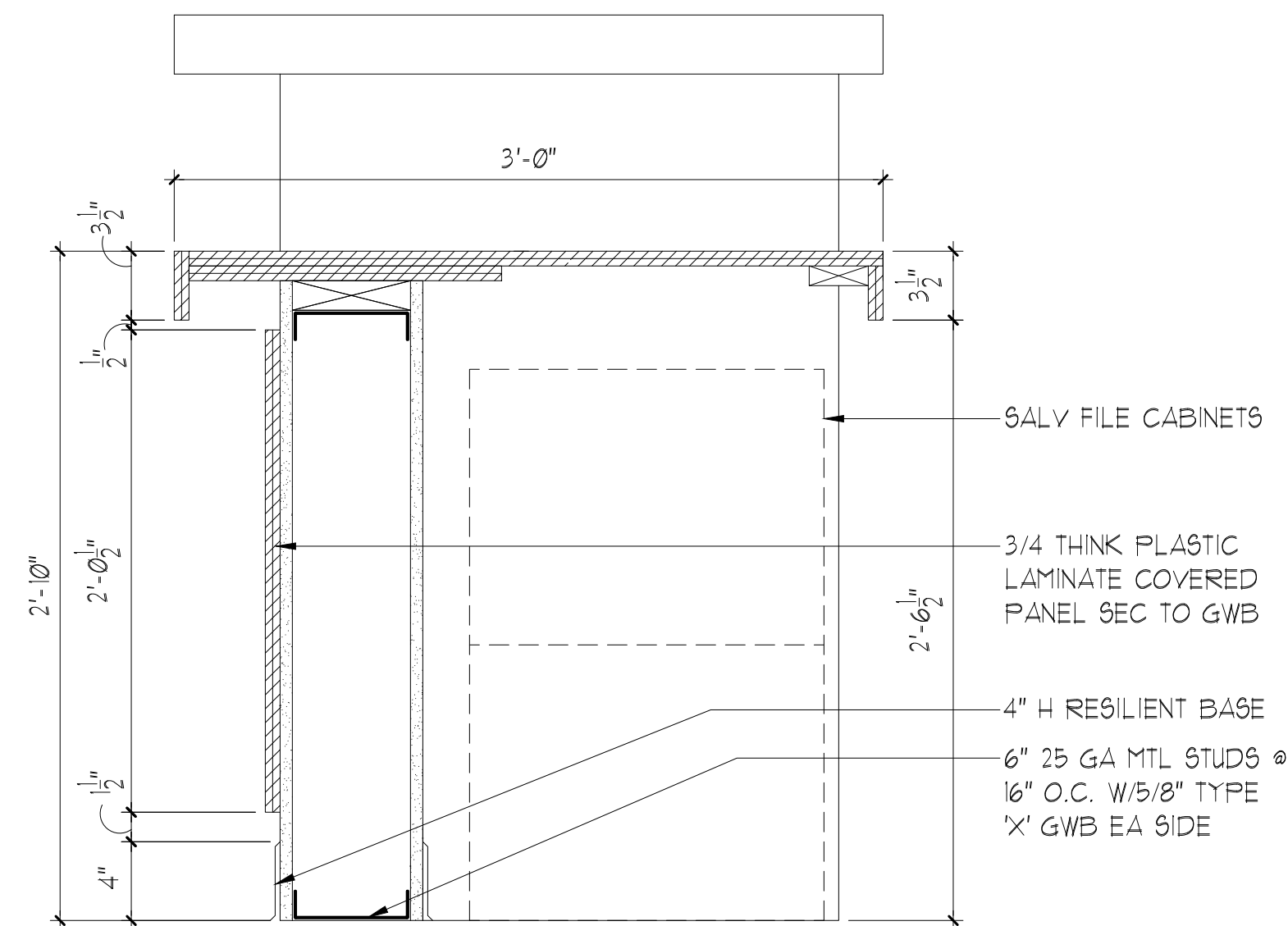
REVISE ALL NOTATIONS & REFERENCES TO PLASTIC LAMINATE (PLAM) COUNTERTOPS TO FABRICATED SOLID SURFACE MATERIAL COUNTERTOPS



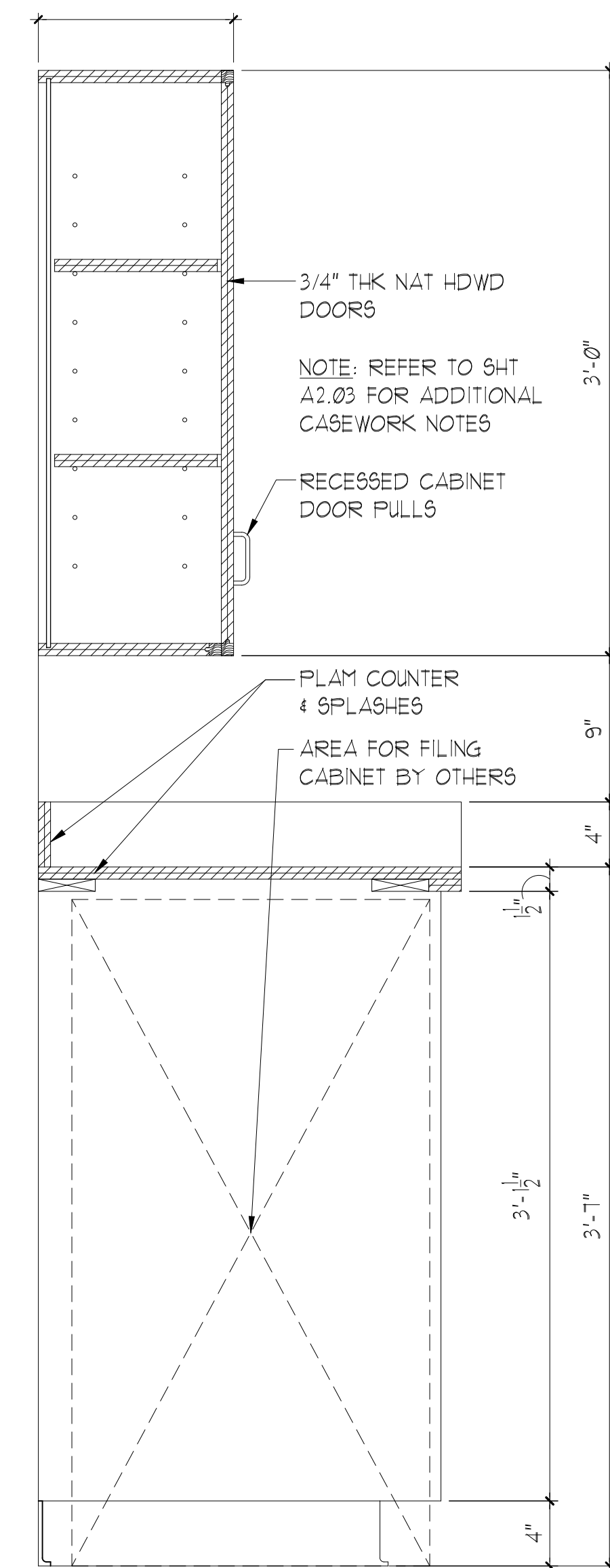
**D2 DETAIL**  
SCALE: 1-1/2"=1'-0"



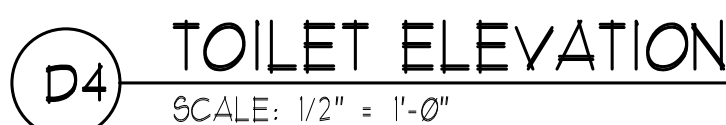
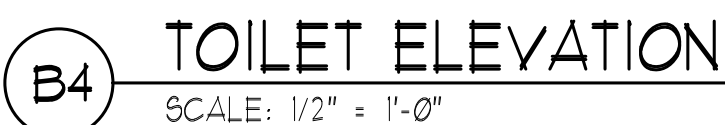
**C1 DETAIL**  
SCALE: 1-1/2"=1'-0"



**E1 DETAIL**  
SCALE: 1-1/2"=1'-0"



**E2 DETAIL**  
SCALE: 1-1/2"=1'-0"

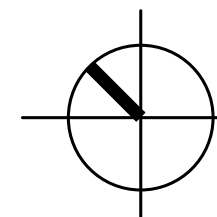


NOTE: PROVIDE NON-COM WOOD BLOCKING IN WALLS TO ANCHOR TOILET ACCESSORIES, TYPE

1. ALL PATCHING, REPAIR AND RENOVATION WORK SHALL MATCH, COMPLIMENT AND ALIGN WITH THE EXISTING ADJACENT CONDITIONS.
2. AREAS WHERE PREVIOUSLY PAINTED CMU WALL DEMOLITION ARE TO BE PERFORMED MUST BE SEALED OFF THOROUGHLY FROM ADJACENT AREAS, INCLUDING ALL ABOVE CEILING AREAS TO UNDERSIDE OF DECK ABOVE OR HORIZONTALLY ABOVE SPACES TO ADJACENT WALLS.
3. CMU SHALL BE CUT AND REMOVED GENERALLY USING WET METHODS TO MINIMIZE THE GENERATION OF AIRBORNE DUST AND DEBRIS. PERFORM SAWCUTS IN CMU OVER TAPED SURFACES.
4. EXISTING BULLETIN BOARDS, MARKER BOARDS AND TACKABLE SURFACES THROUGHOUT SEVERAL SPACES IN THE SCOPE OF WORK ARE ADHERED TO THE WALLS USING ADHESIVE. TAKE CARE WHEN REMOVING THESE ITEMS TO PRESERVE THE CMU SURFACE BELOW.
5. FILL ALL HOLES, SPALLS, DEFORMATIONS, CRACKS AND OTHER DEFECTS IN WALLS PRIOR TO PAINTING.
6. REMOVE ALL EMPTY, UNUSED AND/OR ABANDONED LEGACY WIRING AND WIREHOLD THROUGHOUT THE WORK AREA. CONFIRM WITH OWNER REPRESENTATIVE OR ARCHITECT/ENGINEER IF UNSURE IF AN ITEM MEETS THIS CRITERIA.
7. SCRAPE LOOSE PAINT FROM CMU WALLS. SAND SMOOTH AND PREP FOR PAINTING.
8. APPLY TWO FILLER COATS AND TWO FINISH COATS AT UNPAINTED BLOCK SURFACES.
9. PAINT ALL WALL SURFACES WITHIN THE SCOPE OF WORK AND MAKE REPAIRS TO ANY OTHER FINISHES THAT MAY BECOME DAMAGED DURING THE COURSE OF THE WORK.
10. REFER TO SPECIFICATION SECTION 012100, "ALLOWANCES" FOR SPECIFIC BID ALLOWANCES TO INCLUDE FOR REPAIRS DESCRIBED HEREIN THAT ARE NOT SHOWN OR SPECIFICALLY IDENTIFIED ON THE DRAWINGS.



NOTE: REPLACE AND APPLY ONLY AS MUCH WALL TILE AS NECESSARY TO REPAIR AND INFILL THESE WALL SURFACES AS NEEDED TO MATCH EXISTING TILE COURSING AND LAYOUT. A SEPARATE PROJECT SHALL COAT THE TILE TO ACHIEVE A UNIFORM COLOR APPEARANCE



SCALE: 1/4"=1'-0"



VIRGINIA DEPARTMENT OF  
EDUCATION PROJECT NO.  
117-506-00-102

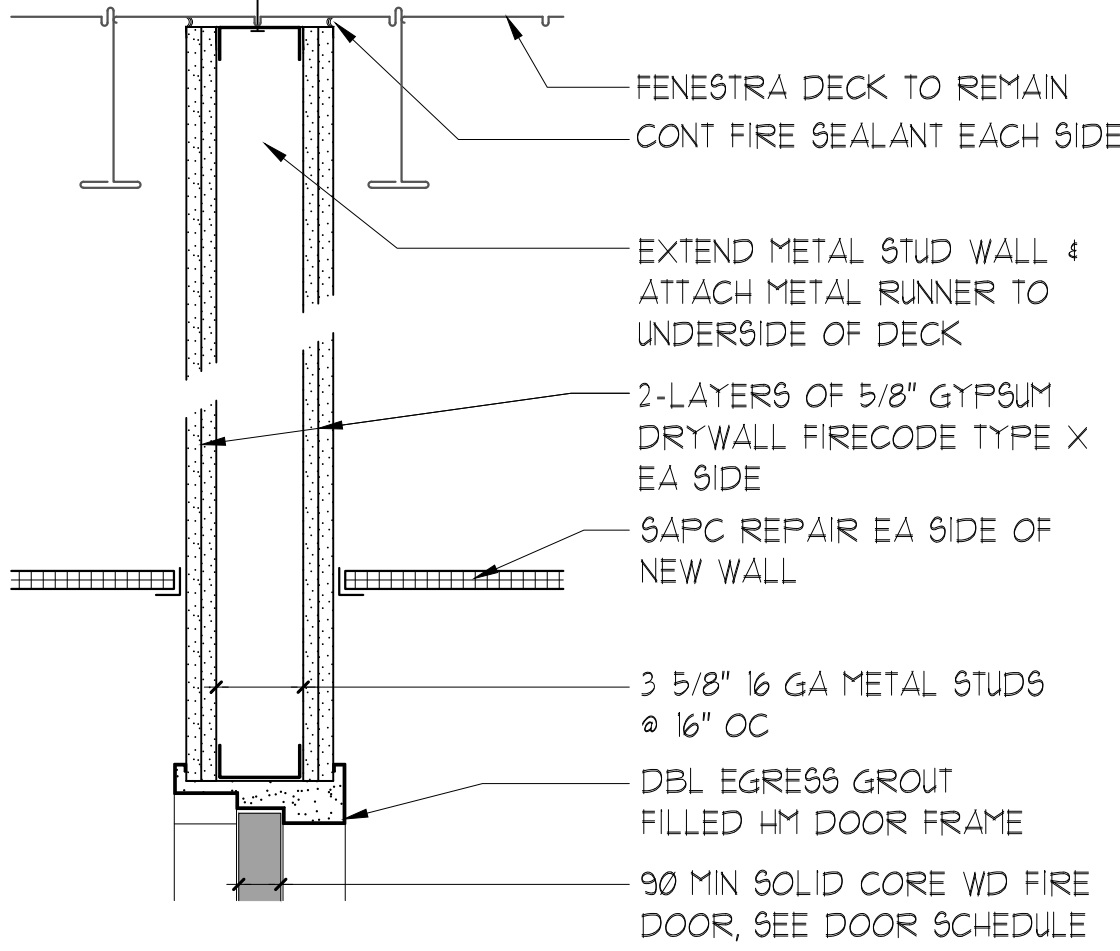


REV	DESCRIPTION	DATE
1	REVISION #1	3/17/25
2	REVISION #2	3/18/25

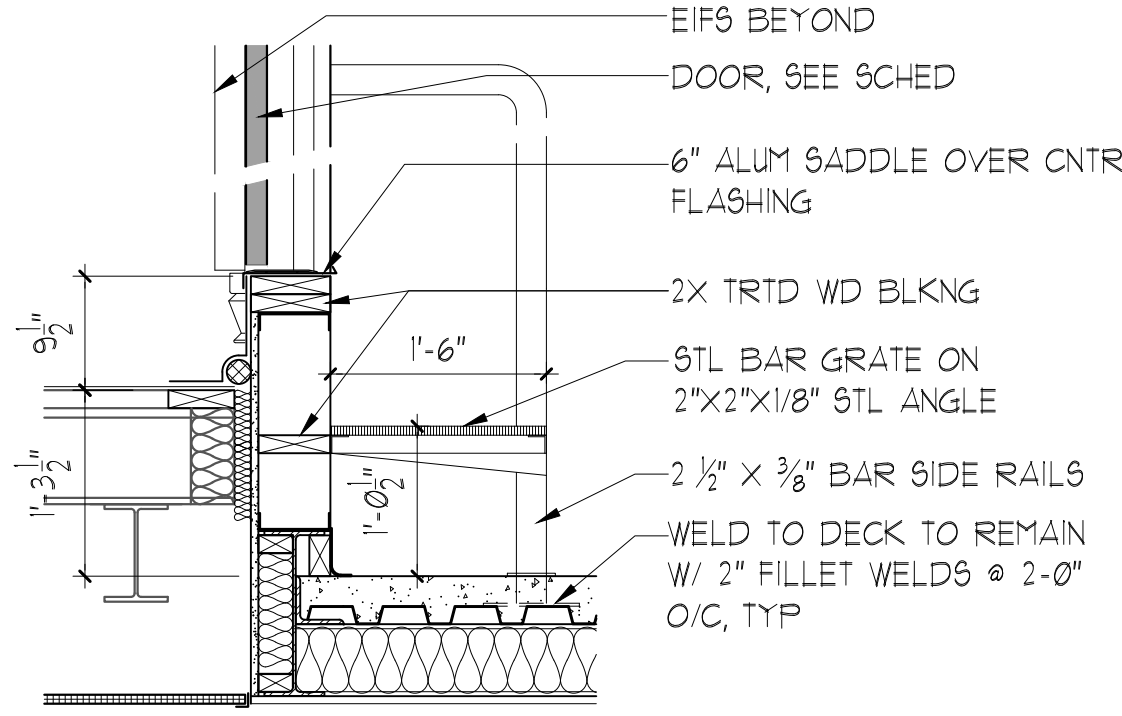


J O B   N U M B E R   2 3 1 2

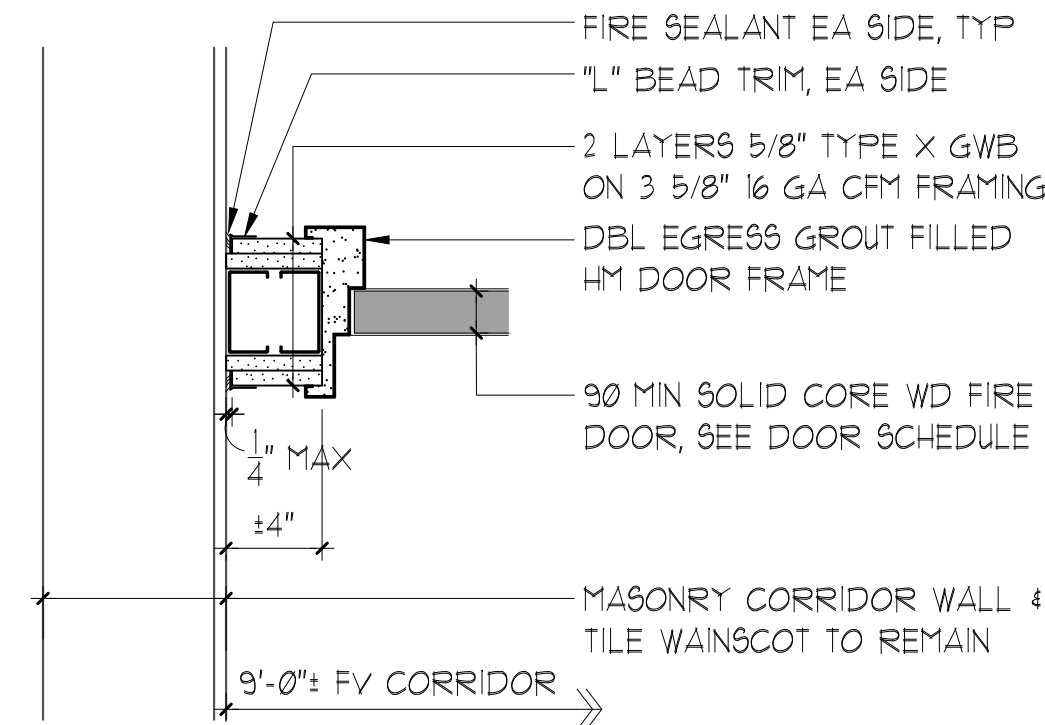
A4.02



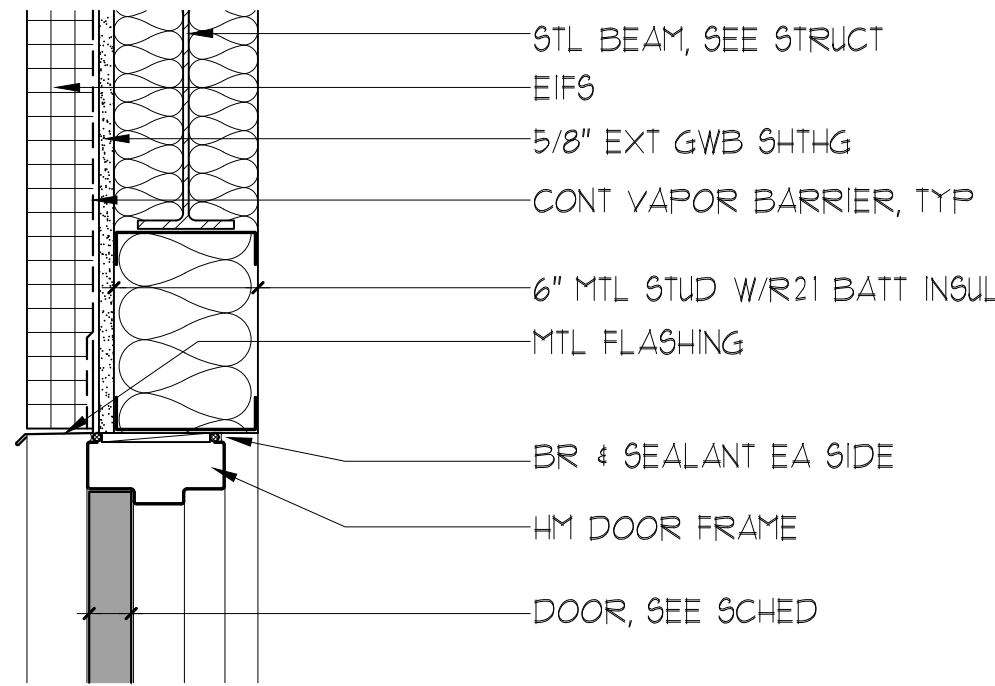
**A4 DETAIL** HEAD  
SCALE: 1 1/2" = 1'-0"



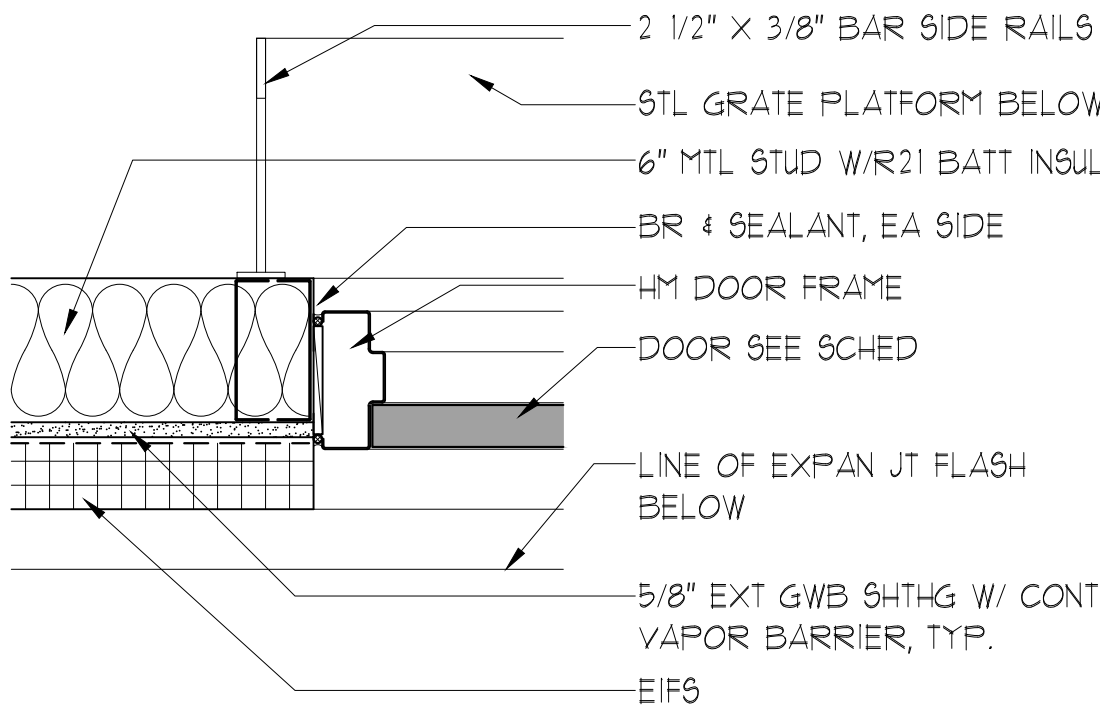
**B4 DETAIL**  
SCALE: 1 1/2" = 1'-0"



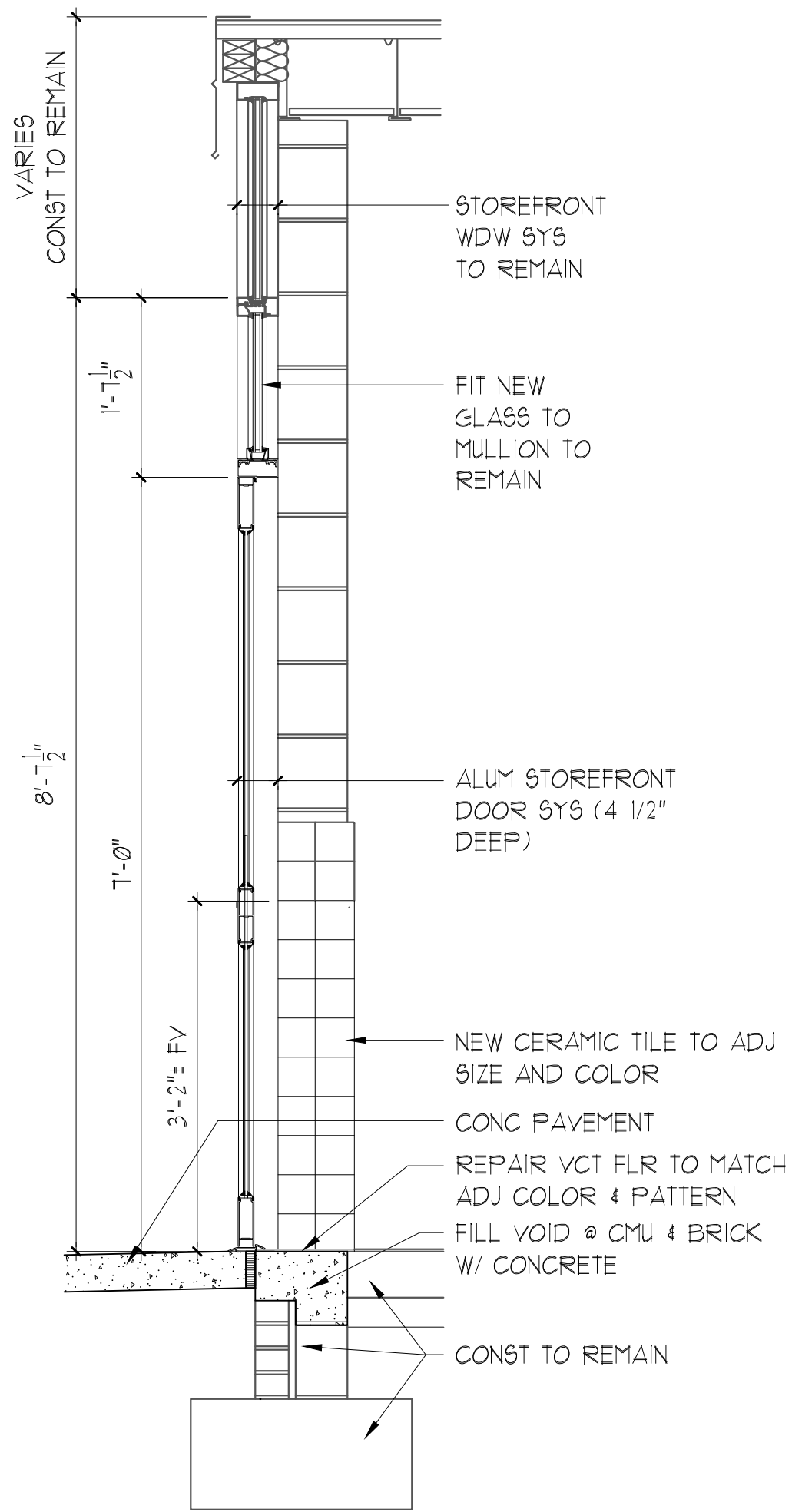
**A3 DETAIL** JAMB  
SCALE: 1 1/2" = 1'-0"



**A2 DETAIL** HEAD  
SCALE: 1 1/2" = 1'-0"



**A1 DETAIL** JAMB  
SCALE: 1 1/2" = 1'-0"

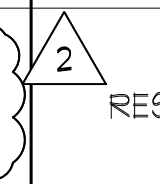


**B1 SECTION**  
SCALE: 3/4"=1'-0"

## ABBREVIATIONS:

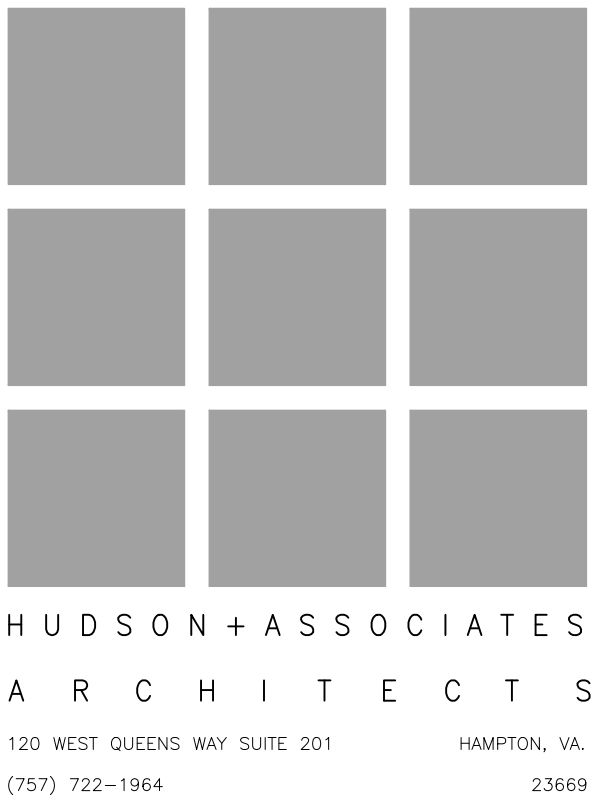
ALUM	ALUMINUM
APC	ACOUSTICAL PANEL CEILING
BLK	CONCRETE MASONRY UNIT
BRK	BRICK VENEER
CONC	CONCRETE
CPT	CARPET
CT	CERAMIC TILE
EPXR	EPOXY RESINOUS FLOORING
FLNT	FIRE LITE LT GLASS
GWB	GYP SUM WALLBOARD (TYPE 'X'; ABUSE RESISTANT)
IT	INSULATED TEMPERED
INSUL	INSULATED
PCT	PORCELAIN CERAMIC TILE
PT	PAINT
RESIL	RESILIENT BASE TRIM
SAPC	SUSPENDED ACOUSTICAL PANEL CEILING
TZO	TERRAZZO FLOORING
VCT	VINYL COMPOSITE TILE
XAPC	EXISTING ACOUSTICAL PANEL CEILING
XBLK	EXISTING CONCRETE MASONRY UNIT
XBRK	EXISTING BRICK MASONRY
XCONC	EXISTING CONCRETE
XCT	EXISTING CERAMIC TILE
XGWB	EXISTING GYP SUM WALL BOARD
XRESIL	EXISTING RESILIENT BASE TRIM
XSAPC	EXISTING SUSPENDED ACOUSTICAL PANEL CEILING
XSTRUCT	EXISTING STRUCTURAL JOISTS
XTZO	EXISTING TERRAZZO FLOORING
XVCT	EXISTING VINYL COMPOSITION TILE

## ROOM FINISH SCHEDULE

ROOM NO	ROOM NAME	FLOOR		BASE	WALLS						CEILING		
		MATL	FIN	MATL	MATL	FIN	W&COT	PAINT COLOR	MATL	FIN	HEIGHT	PAINT COLOR	
100/200	VESTIBULE	CONC	TZO	RESIL	BRK	---	---						
101	S.R.O.	CONC	TZO	RESIL	GWB	PT	---	SW-1014 "ELDER WHITE"	GWB	PT	VARIES	SW-1004 "SNOWBOUND"	
					BRK	---	---		GWB	PT	10'-0"	SW-1004 "SNOWBOUND"	
					GWB	PT	---	SW-1014 "ELDER WHITE"	SAPC	---			
102	ADMIN OFFICE	CONC	CPT	RESIL	GWB	PT	---	SW-1014 "ELDER WHITE"	SAPC	---	9'-4"		
103	A.P. OFFICE	CONC	CPT	RESIL	GWB	PT	---	SW-1014 "ELDER WHITE"	SAPC	---	9'-4"		
104	RECEPTION	CONC	VCT	RESIL	GWB	PT	---	SW-1014 "ELDER WHITE"	SAPC	---	8'-0"		
105	TOILET	CONC	EPXR	PCT	GWB	PT	---	SW-1014 "ELDER WHITE"	SAPC	---	8'-0"	SW-1004 "SNOWBOUND"	
106	PRINCIPAL	CONC	CPT	RESIL	BLK	PT	---		SAPC	---	8'-0"		
107	LOBBY	XCONC	XTZO	XRESIL/RESIL	GWB	PT	---	SW-1014 "ELDER WHITE"	SAPC	---			
					BRK	---	---		X&SAPC	---			
					GWB	PT	---	SW-1014 "ELDER WHITE"	SAPC	---			
					XBLK	PT	XCT	SW-1014 "ELDER WHITE"	GWB	PT	8'-0"	SW-1004 "SNOWBOUND"	
								SW-6966 "BLUE BLOOD"					
							SW-6868 "REAL RED"						
108	GIRLS TOILET	XCONC	XCT	XCT	XBLK	XPT	XCT	SW-1014 "ELDER WHITE"	XGWB	---	8'-0"		
					BLK	PT	CT						
109	BOYS TOILET	XCONC	XCT	XCT	XBLK	XPT	XCT	SW-1014 "ELDER WHITE"	XGWB	---	8'-0"		
					BLK	PT	CT						
110	SUPPLY	XCONC	XVCT	XRESIL/RESIL	XBLK	PT	---	SW-1014 "ELDER WHITE"	SAPC	---	8'-0"		
					BLK	PT							
110A	RESTROOM	XCONC	XCT	XCT	XBLK	PT	XCT	SW-1014 "ELDER WHITE"	XGWB	PT	8'-0"	SW-1004 "SNOWBOUND"	
					XCT	---	4'-0" HT						
111	OFFICE	XCONC		RESIL	2	XBLK	PT	---					
						BLK	PT	---	SW-1014 "ELDER WHITE"	SAPC	---	8'-0"	
						XGWB	PT	---					
						GWB	PT	---					
112	MECH	XCONC	VCT	RESIL	XBLK	PT	---	SW-1014 "ELDER WHITE"	---	---	VARIES		
					XGWB	PT	---						
					GWB	PT	---						
113	CLINIC	XCONC	XVCT	XRESIL	XBLK	PT	---	SW-1014 "ELDER WHITE"	APC	---			
					BLK	PT	---		X&STRUCT	PT	9'-4"	SW-1004 "SNOWBOUND"	
113A	CLOSET	XCONC	XVCT	XRESIL	XBLK	PT	---	SW-1014 "ELDER WHITE"	X&SAPC	---	8'-0"	PT ALL EXIST DR FRAMES SW-6966 "BLUE BLOOD"	
114	CLOSET	XCONC	VCT	RESIL	XBLK	PT	---	SW-1014 "ELDER WHITE"	APC	---	9'-4"		
					BLK	PT	---		X&STRUCT	PT		SW-1004 "SNOWBOUND"	
115	CLOSET	XCONC	XVCT	XRESIL	XGWB	PT	---	SW-1014 "ELDER WHITE"	XGWB	PT	1'-11"	SW-1004 "SNOWBOUND"	
116	CONF. ROOM	XCONC	CPT	RESIL	XBLK	PT	---		SAPC	---	8'-0"		
					BLK	PT	---	SW-1014 "ELDER WHITE"					
					GWB	PT	---		GWB	PT	1'-8"	SW-1004 "SNOWBOUND"	
117	WORK ROOM	XCONC	VCT	RESIL	XBLK	PT	---		APC	---			
					BLK	PT	---	SW-1014 "ELDER WHITE"			9'-4"		
					GWB	PT	---		X&STRUCT	PT		SW-1004 "SNOWBOUND"	
118	STAFF LOUNGE	XCONC	VCT	RESIL	XBLK	PT	---		APC	---			
					BLK	PT	---	SW-1014 "ELDER WHITE"			9'-4"		
					GWB	PT	---		X&STRUCT	PT		SW-1004 "SNOWBOUND"	
118A	RESTROOM	XCONC	XCT	XCT	XBLK	PT	XCT	SW-1014 "ELDER WHITE"	XGWB	PT	8'-0"	SW-1004 "SNOWBOUND"	
					XCT	---	4'-0" HT						
119	HVAC	XCONC	XVCT	XRESIL	XBLK	PT	---	SW-1014 "ELDER WHITE"	GWB	PT	9'-4"	SW-1004 "SNOWBOUND"	
					XGWB	PT							
120	HVAC	XCONC	XVCT	XRESIL	XBLK	PT	---	SW-1014 "ELDER WHITE"	GWB	PT	9'-4"	SW-1004 "SNOWBOUND"	
					XGWB	PT							
121	CAFETERIA	XCONC	VCT	RESIL	XBLK	PT	XCT	SW-1014 "ELDER WHITE"	XAPC	---	VARIES		
					BLK	PT	CT		X&STRUCT	---			
122	CORRIDOR	XCONC	XTZO	XCT	XBLK	PT	XCT	SW-1014 "ELDER WHITE"	X&SAPC	---	8'-0"		
					GWB	PT	4'-0" HT	SW-6966 "BLUE BLOOD"	SAPC	---			
								SW-6868 "REAL RED"					
123	CORRIDOR	XCONC	XTZO	XCT	XBLK	---	XCT	SW-1014 "ELDER WHITE"	X&SAPC	---	8'-0"		
					GWB	PT	4'-0" HT	SW-6966 "BLUE BLOOD"	SAPC	---			
								SW-6868 "REAL RED"					
124	COT ROOM	XCONC	XVCT	XRESIL	XBLK	PT	---	SW-1014 "ELDER WHITE"	X&SAPC	---	8'-0"		
124A	RESTROOM	XCONC	XCT	XCT	XBLK	PT	XCT	SW-1014 "ELDER WHITE"	XGWB	PT	8'-0"	SW-1004 "SNOWBOUND"	
					XCT	---	4'-0" HT						
124B	CLOSET	XCONC	XVCT	XRESIL	XBLK	PT	---	SW-1014 "ELDER WHITE"	X&SAPC	---	8'-0"		
125	OFFICE	XCONC	CPT	RESIL	XBLK	PT	---	SW-1014 "ELDER WHITE"	X&SAPC	---	8'-0"		
126	RESTROOM	XCONC	XCT	XCT	XBLK	PT	XCT	SW-1014 "ELDER WHITE"	XGWB	PT	8'-0"	SW-1004 "SNOWBOUND"	
					XCT	---	4'-0" HT						
127	CORRIDOR	XCONC	XTZO	XCT	XBLK	---	XCT	SW-1014 "ELDER WHITE"	X&SAPC	---	8'-0"		
					GWB	PT	4'-0" HT	SW-6966 "BLUE BLOOD"	SAPC	---			
								SW-6868 "REAL RED"					
201	MEZZANINE	CONC	CONC	---	---	---	---		---	---	8'-0"		

## FINISH SCHEDULE GENERAL NOTES:

- REFER TO SHEET A6.05 FOR FINISH COLOR SCHEDULE.
- WHERE PERFORMING DEMOLITION AT WALLS, PATCHING OF SURFACES IS REQUIRED OR IMPLIED BY WORK NOTES ELSEWHERE ON THE DRAWINGS. PAINT ALL SURFACES TO BE PATCHED TO MATCH ADJACENT WALL COLOR.
- WHERE EXISTING ROOMS ARE SCHEDULED TO BE PAINTED, PAINT ALL EXISTING WALL SURFACES, EXTERIORS OF BUILT-IN WOOD CABINETS, AND METAL DOOR FRAMES. DO NOT PAINT OVER EXISTING WALL WAINSCOT TILING.
- REFER TO SHEET A4.02 FOR "BLOCK" WALL REPAIR, PAINT AND PREPARATION NOTES," WHICH SHALL APPLY AT ALL EXISTING SPACES WHERE EXISTING WALLS ARE NOTED AS BLOCK OR CMU.
- WHERE EXISTING STRUCTURE IS INDICATED TO BE PAINTED AT ROOMS 113, 114 AND 118, THE INTENT IS TO PAINT THE UNDERSIDE OF THE EXISTING METAL ROOF DECK AND TEES PRIOR TO APPLICATION OF THE NEW CEILING PANELS THAT LAY INTO THE TEES.



## SECURITY VESTIBULE & OFFICE ADDITION & ALTERATIONS FOR YATES ELEMENTARY SCHOOL

73 MAXWELL LANE  
NEWPORT NEWS, VIRGINIA 23606

VIRGINIA DEPARTMENT OF  
EDUCATION PROJECT NO.  
11T-506-00-102



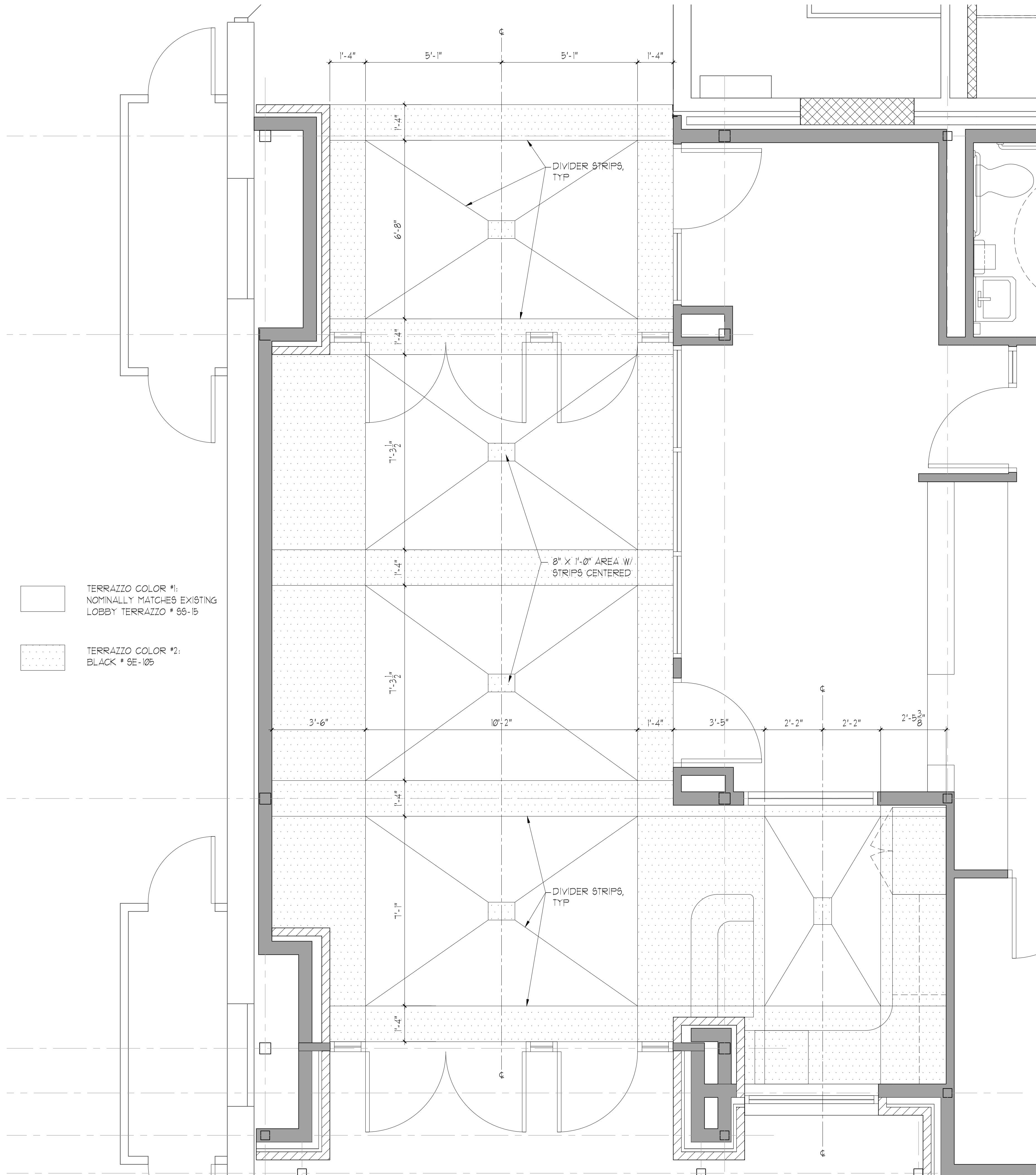
DECEMBER 30, 2024

REV	DESCRIPTION	DATE
1	REVISION #1	3/17/25
2	REVISION #2	3/18/25

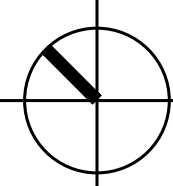
## FINISH SCHEDULE & DOOR DETAILS

JOB NUMBER 2312

A6.03



- TERRAZZO COLOR #1:  
NOMINALLY MATCHES EXISTING  
LOBBY TERRAZZO # 95-15
- TERRAZZO COLOR #2:  
BLACK # 9E-105

 **FLOOR PATTERN PLAN**  
SCALE: 1/2" = 1'-0"

COLOR SCHEDULE

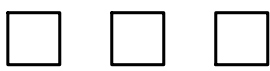
EXTERIOR COLORS:

- BRICK:
  - PRIMARY FIELD COLOR: TO MATCH GLEN-GERY/LAWRENCEVILLE "OLD RICHMOND" (SHADED VELOUR), MODULAR.
  - MORTAR COLOR: STANDARD LIGHT GRAY TO MATCH WORKRITE #WR-2410 "SLATE."
- ALUMINUM STOREFRONT FRAMING & ENTRANCE DOORS: DARK BRONZE ANODIZED.
- STANDING SEAM METAL ROOF: PAC-CLAD, "FOREST GREEN."
- EXTERIOR SHEET METAL (EAVES, SOFFITS, FASCIAE, GUTTERS): BRIGHT WHITE PVDF FINISH. WHERE EXISTING GUTTERS REQUIRE REPAIR OR PARTIAL REPLACEMENT FABRICATE FROM DARK BRONZE PVDF-COATED ALUMINUM.
- EXTERIOR SHEET METAL (DOWNSPOUTS): "CLASSIC BRONZE" PVDF FINISH TO EXISTING DOWNSPOUTS, WHERE INSTALLED OVER BRICK; "ALMOND" PVDF FINISH TO MATCH EIFS, WHERE INSTALLED OVER EXTERIOR INSULATION FINISH SYSTEM.
- EXTERIOR INSULATION FINISH SYSTEM (EIFS): STO CORPORATION, #16000, OFF-WHITE, TO MATCH UPPER PANELS OF EXISTING AUDITORIUM.
- EXISTING EXTERIOR DOORS AND FRAME (CAFETERIA EXIT): PAINT COLOR, SHERWIN-WILLIAMS SW-6279 "BLACK SWAN" SEMI-GLOSS.

INTERIOR COLORS:

- TERRAZZO FLOOR AT VESTIBULE:
  - PRIMARY FIELD COLOR: TERRAZZO, STANDARD SERIES, #95-102, WHITE/GRAY/BROWN/BLACK.
  - ACCENT COLOR #1: TERRAZZO SEMI-EXOTIC SERIES, #9E-105, BLACK WITH WHITE AND BROWN FLECKS.
- INTERIOR ALUMINUM STOREFRONT WINDOW FRAMING: DARK BRONZE ANODIZED.
- STEEL DOORS, DOOR FRAMES & STOREFRONT WINDOWS (INCLUDING FIRE-RATED):
  - NEW AND EXISTING H.M. FRAMES: PAINT COLOR, SHERWIN-WILLIAMS SW-1029 "AGREEABLE GRAY," SEMI-GLOSS, EXCEPT AS NOTED BELOW.
  - NEW AND EXISTING H.M. FRAMES WITHIN EXISTING SPACES AT CORRIDORS, CORRIDOR-SIDE ONLY: PAINT COLOR, SHERWIN-WILLIAMS SW-6966 "BLUE BLOOD," SEMI-GLOSS.
- WOOD DOORS: NATURAL BIRCH, PLAINSLICED, STAINED TO MATCH VT INDUSTRIES "HERITAGE" COLLECTION, #AL-18 "ALPINE" FINISH WITH CLEAR SATIN.
- DOOR HARDWARE: MATCH ANSI/BHMA #30 SATIN STAINLESS STEEL OR #26 SATIN CHROME FOR ITEMS AS SPECIFIED UNDER SPECIFICATION SECTION 081100.
- CERAMIC WALL TILE/BASE:
  - NEW VESTIBULE & LOBBY: DAL-TILE COLOR WHEEL SERIES, "WHITE" (GLOSSY) #0100, 4-1/4 INCH BY 4-1/4 INCH.
  - NEW WALL TILE INSTALLATION, EXISTING CORRIDOR: DAL-TILE COLOR WHEEL CLASSIC, #KIT5, "BISCUIT," (GLOSSY) 4-1/4 INCH BY 4-1/4 INCH.
- PAINT COLORS AT WALLS AND SOFFITS:
  - WALLS-FIELD COLOR (TYPICAL): NEWPORT NEWS PUBLIC SCHOOLS STANDARD OFF-WHITE, OR SHERWIN-WILLIAMS SW-1014 "ELDER WHITE," EGGSHELL SHEEN.
  - GWB SOFFITS & CEILINGS: SHERWIN-WILLIAMS SW-1004 "SNOWBOUND," EGGSHELL SHEEN.
  - EXISTING CORRIDOR ACCENT STRIPE (BLUE): SHERWIN-WILLIAMS SW-6966 "BLUE BLOOD," SEMI-GLOSS.
  - EXISTING CORRIDOR ACCENT STRIPE (RED): SHERWIN-WILLIAMS SW-6868 "REAL RED," SEMI-GLOSS.
- VINYL COMPOSITION FLOOR TILE: ARMSTRONG FLOORING #52513, "CIRQUE WHITE."
- CARPET (MODULAR): MANNINGTON "HALFTIME" STYLE, COLOR "COBB," 24" BY 24".
- RESILIENT FLOOR BASE:
  - AT CARPET & VCT FLOORING: JOHNSONITE #8 "NAVY BLUE," 4-INCH HIGH.
- RESINOUS EPOXY FLOORING: 60Y RESIN SYSTEMS, "HOUNDSTOOTH."
- ACOUSTICAL CEILING PANELS: USG INTERIORS, "RADAR EDUCATION ACOUSTICAL PANELS" 2'-0" BY 2'-0" BY 5/8-INCH, STANDARD WHITE.
- INTERIOR WOODWORK, INCLUDING BASE AND WALL CABINETS: NATURAL BIRCH, PLAINSLICED, WITH STAIN AND CLEAR FINISH TO MATCH INTERIOR WOOD DOORS.
- COUNTERTOPS, FABRICATED SOLID SURFACE MATERIAL: MEGANITE, URBAN HABITAT #1048A
- PLASTIC LAMINATE PANELS AT RECEPTION COUNTER: FORMICA, METAL SERIES, #06411 "SEASONED PLANKED ELM."
- ROLLER WINDOW SHADES:
  - FABRIC: HUNTER DOUGLAS CONTRACT, SHEERWEAVE 4400, COLOR: "ECO-GRANITE."
  - ALUMINUM VALENCE AND HEADER ASSEMBLY: DARK BRONZE ALUMINUM TO MATCH EXTERIOR WINDOW FRAMES. CLEAR ANODIZED ALUMINUM TO MATCH INTERIOR H.M. FRAMES.

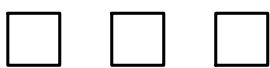
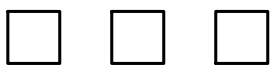
HUDSON+ASSOCIATES  
ARCHITECTS  
120 WEST QUEENS WAY SUITE 201  
(757) 722-1964  
HAMPTON, VA  
23669



SECURITY VESTIBULE &  
OFFICE ADDITION &  
& ALTERATIONS FOR  
YATES ELEMENTARY SCHOOL

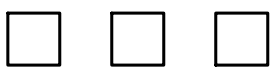
73 MAXWELL LANE  
NEWPORT NEWS, VIRGINIA 23606

VIRGINIA DEPARTMENT OF  
EDUCATION PROJECT NO.  
11T-506-00-102



DECEMBER 30, 2024

REV	DESCRIPTION	DATE
1	REVISION #1	3/11/25
2	REVISION #2	3/18/25



FLOOR PATTERN PLAN  
& COLOR SCHEDULE

J O B   N U M B E R   2 3 1 2

A6.05